

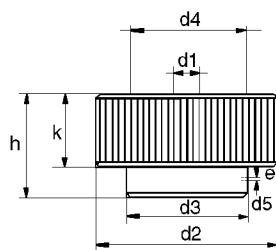
Nous avons voulu dans un espace minimum vous donner un maximum d'informations. Celles-ci vous donnent un aperçu de notre programme. Pour de plus amples informations, notre site internet de plus de mille pages est à votre disposition. Pour accéder à la page voulue prendre notre adresse internet [www.gorreux.be](http://www.gorreux.be). Dans la page d'accueil à gauche avant dernière position « recherche », dans la case « introduisez la référence » (le nr de la pièce du catalogue) vous voilà à la page demandée, en bas de la page « cliquer » sur next pour aller à la page suivante et ainsi faire le tour de ce chapitre. Il y a environ 40 chapitres que vous pouvez atteindre par la page d'accueil à gauche 3 ème position « chapitre » choisir le titre voulu vous y verrez de petites images du chapitre demandé et « cliquer » sur celle qui vous intéresse.

Gorreux - Tel: 00 32 (0) 81 56.71.91 Fax: 00 32 (0) 81 56.77.91 [www.gorreux.be](http://www.gorreux.be)

**DIN 6303**

ECROU MOLETE

KARTELMOER

MAT : acier  
staal

| code A | code B | inox-rvs | d1   | d2 | d3 | d4 | d5  | goupil, stift | e   | h  | k  | $\Delta^{\pm}$ |
|--------|--------|----------|------|----|----|----|-----|---------------|-----|----|----|----------------|
| 191911 | 191901 | 191921   | M 5  | 20 | 14 | 15 | 1,4 | 1,5           | 2,5 | 12 | 8  | 17             |
| 191912 | 191902 | 191922   | M 6  | 24 | 16 | 18 | 1,4 | 1,5           | 2,5 | 14 | 10 | 27             |
| 191913 | 191903 | 191923   | M 8  | 30 | 20 | 24 | 1,9 | 2             | 3   | 17 | 12 | 50             |
| 191914 | 191904 | 191924   | M 10 | 36 | 28 | 30 | 2,9 | 3             | 4   | 20 | 14 | 83             |
| 191915 | 191905 | -        | M 12 | 40 | 32 | 34 | 3,9 | 4             | 4   | 24 | 16 | 125            |

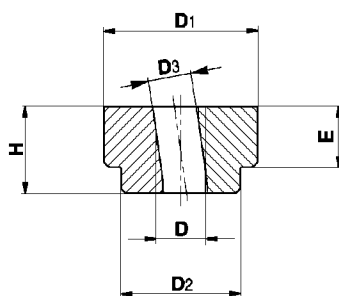
A = SANS TROU - ZONDER GAT (e)

B = AVEC TROU - MET GAT (e)

**603**

ECROU MOLETE A SERRAGE RAPIDE

KARTELMOER MET SNELSPANNING

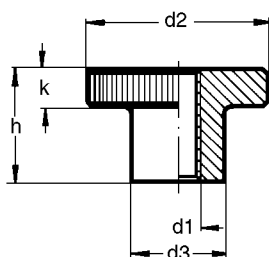
MAT : acier de décolletage bruni  
gebruineerd schroevenstaal

| CODE   | D   | D1 | D2 | D3   | E  | H  | $\Delta^{\pm}$ |
|--------|-----|----|----|------|----|----|----------------|
| 191951 | M5  | 20 | 14 | 5,2  | 8  | 12 | 25             |
| 191952 | M6  | 24 | 16 | 6,2  | 10 | 14 | 38             |
| 191953 | M8  | 30 | 20 | 8,2  | 12 | 17 | 75             |
| 191954 | M10 | 36 | 28 | 10,3 | 14 | 20 | 130            |
| 191955 | M12 | 40 | 32 | 12,3 | 16 | 24 | 185            |

**DIN 466**

ECROU MOLETE HAUT

HOGE KARTELMOER

MAT : acier  
staal

1.4305

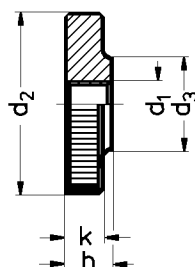
| code   | d1  | d2 | d3 | h   | k   | $\Delta^{\pm}$ |
|--------|-----|----|----|-----|-----|----------------|
| 191800 | M3  | 12 | 6  | 7,5 | 2,5 | 8              |
| 191801 | M4  | 16 | 8  | 9,5 | 3,5 | 10             |
| 191802 | M5  | 20 | 10 | 12  | 4   | 15             |
| 191803 | M6  | 24 | 12 | 15  | 5   | 28             |
| 191804 | M8  | 30 | 16 | 18  | 6   | 48             |
| 191805 | M10 | 36 | 20 | 23  | 8   | 90             |
| 191806 | M12 | 40 | 22 | 25  | 10  | 138            |

| code   | d1 | d2 | d3 | h  | k |
|--------|----|----|----|----|---|
| 191821 | M4 | 16 | 8  | 10 | 4 |
| 191822 | M5 | 20 | 10 | 12 | 4 |
| 191823 | M6 | 24 | 12 | 15 | 5 |
| 191824 | M8 | 30 | 16 | 18 | 6 |

**DIN 467**

ECROU MOLETE BAS

VLAKKE KARTELSCHROEF

MAT : acier  
staalEXEC : tournée, surfaces planes usinées  
UITV : gedraaid, vlakke gedeelten  
bewerkt

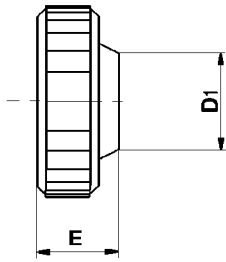
| CODE   | d1   | d2 | d3 | h  | k    | $\Delta^{\pm}$ |
|--------|------|----|----|----|------|----------------|
| 191600 | M 3  | 12 | 6  | 3  | 2,5  | 5              |
| 191601 | M 4  | 16 | 8  | 4  | 3,5  | 7              |
| 191602 | M 5  | 20 | 10 | 5  | 4,0  | 10             |
| 191603 | M 6  | 24 | 12 | 6  | 5,0  | 18             |
| 191604 | M 8  | 30 | 16 | 8  | 6,0  | 33             |
| 191605 | M 10 | 36 | 20 | 10 | 8,0  | 58             |
| 191606 | M 12 | 40 | 22 | 12 | 10,0 | 100            |

Gorreux - Tel: 00 32 (0) 81 56.71.91 Fax: 00 32 (0) 81 56.77.91 [www.gorreux.be](http://www.gorreux.be)

**604**

TETE MOLETEE

KARTELKOP



tête moletée pour vis à six pans creux  
kartelkop voor zeskantmoer

mettre en place tête + vis serrer avec  
force (main ou étau) -  
kop plaatsen + schroef krachtig  
aandraaien (met hand of schroef)

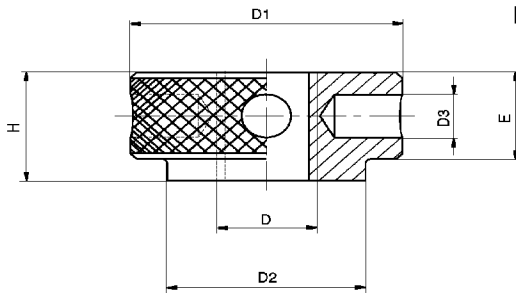
| CODE       | NLM        | FILETAGE | D  | D1  | E   | $\Delta \frac{1}{2}$ |
|------------|------------|----------|----|-----|-----|----------------------|
|            |            | DRAAD    |    |     |     |                      |
| 5604030000 | 604 030 00 | M.3      | 10 | 8,3 | 4,5 | 40                   |
| 5604040000 | 604 040 00 | M.4      | 13 | 9,6 | 5,5 | 60                   |
| 5604050000 | 604 050 00 | M.5      | 16 | 12  | 6,5 | 70                   |
| 5604060000 | 604 060 00 | M.6      | 19 | 13  | 7,5 | 130                  |
| 5604061000 | 604 061 00 | M.6      | 26 | 13  | 7,8 | 180                  |
| 5604080000 | 604 080 00 | M.8      | 26 | 16  | 9,8 | 300                  |

MAT : DELRIN - noir - zwart

**607**

ECROU A BROCHE

PENMOER



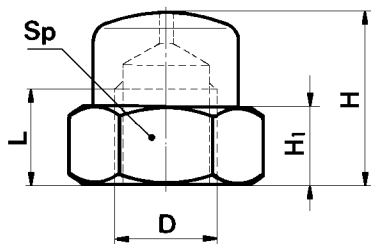
MAT : acier - staal

| CODE       | D    | D1 | D3 | E    | H  | $\Delta \frac{1}{2}$ |
|------------|------|----|----|------|----|----------------------|
| 5607100000 | M.10 | 32 | 4  | 10   | 12 | 90                   |
| 5607120000 | M.12 | 36 | 5  | 13,5 | 16 | 115                  |
| 5607140000 | M.14 | 40 | 6  | 15   | 18 | 210                  |
| 5607160000 | M.16 | 44 | 8  | 16   | 20 | 280                  |

**DIN 1587**

ECROU BORGNE

KAPMOER



MAT : XC 38 bruni  
XC 38 gebruineerd

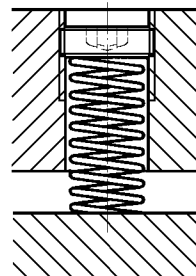
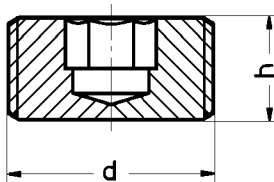
| CODE       | D    | L   | H  | SP | $\Delta \frac{1}{2}$ |
|------------|------|-----|----|----|----------------------|
| 5728050000 | M.5  | 6,5 | 10 | 9  | 4                    |
| 5728060000 | M.6  | 8   | 12 | 10 | 5                    |
| 5728080000 | M.8  | 11  | 15 | 13 | 12                   |
| 5728100000 | M.10 | 13  | 18 | 17 | 20                   |
| 5728120000 | M.12 | 16  | 22 | 19 | 28                   |
| 5728140000 | M.14 | 18  | 25 | 22 | 57                   |
| 5728160000 | M.16 | 21  | 28 | 24 | 70                   |
| 5728200000 | M.20 | 26  | 34 | 30 | 95                   |

**252**

ECROU A SIX PANS CREUX INTERIEUR

BINNENZESKANTMOER

MAT : acier bruni - gebruineerd staal

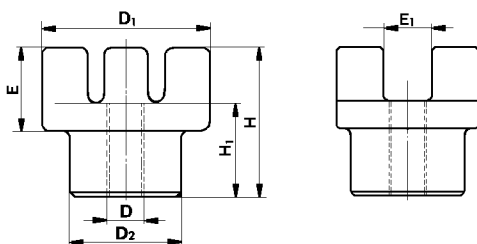


| code     | d         | h  | sw |
|----------|-----------|----|----|
| 12520120 | M12 x 1,5 | 10 | 6  |
| 12520160 | M16 x 1,5 | 10 | 8  |
| 12520200 | M20 x 1,5 | 12 | 10 |
| 12520240 | M24 x 1,5 | 12 | 14 |
| 12520270 | M27 x 1,5 | 12 | 14 |
| 12520300 | M30 x 1,5 | 12 | 17 |
| 12520330 | M33 x 1,5 | 12 | 17 |

**655**

ECROU A BARRE

STANGMOER



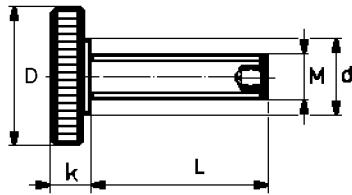
MAT : fonte malléable  
- smeedbaar gietijzer

| CODE       | D    | D1 | D2 | E  | E1 | H  | H1 | $\Delta \frac{1}{2}$ |
|------------|------|----|----|----|----|----|----|----------------------|
| 5655100000 | M.10 | 51 | 32 | 30 | 12 | 54 | 36 | 340                  |
| 5655120000 | M.12 | 51 | 32 | 32 | 12 | 54 | 36 | 340                  |
| 5655140000 | M.14 | 51 | 32 | 32 | 12 | 54 | 36 | 340                  |
| 5655160000 | M.16 | 51 | 32 | 32 | 12 | 54 | 36 | 340                  |
| 5655200000 | M.20 | 64 | 38 | 35 | 18 | 60 | 40 | 530                  |
| 5655240000 | M.24 | 90 | 58 | 45 | 29 | 70 | 40 | 900                  |

# 6314 S

VIS DE REGLAGE

REGELSCHROEF



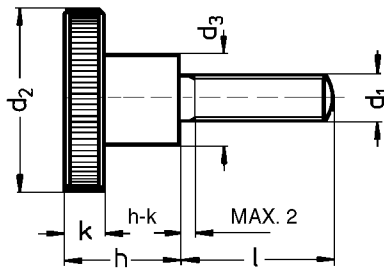
MAT : traité, résistance 8.8  
veredeld, vastheid 8.8

| CODE  | M x L    | D  | d  | k  | $\frac{L}{d}$ |
|-------|----------|----|----|----|---------------|
| 30351 | M10 x 39 | 30 | 16 | 8  | 52            |
| 30352 | M12 x 48 | 36 | 20 | 10 | 96            |
| 30353 | M16 x 55 | 42 | 25 | 13 | 180           |
| 30354 | M20 x 69 | 50 | 25 | 16 | 320           |
| 30355 | M24 x 87 | 60 | 34 | 20 | 590           |

# DIN 464

VIS MOLETEE HAUTE

HOGE KARTELSCHROEF



MAT : acier - staal 5.8



INOX - RVS 1.4305

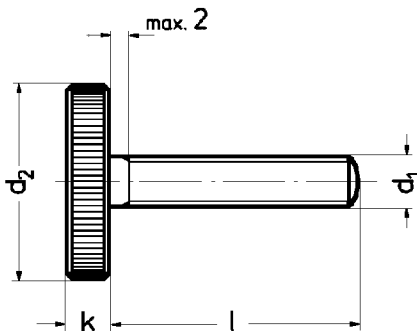
| code   | d1  | L  | d2 | d3 | h   | k   |
|--------|-----|----|----|----|-----|-----|
| 191701 | M3  | 10 | 12 | 6  | 7,5 | 2,5 |
| 191702 | M3  | 12 | 12 | 6  | 7,5 | 2,5 |
| 191703 | M3  | 16 | 12 | 6  | 7,5 | 2,5 |
| 191704 | M4  | 8  | 16 | 8  | 9,5 | 3,5 |
| 191705 | M4  | 10 | 16 | 8  | 9,5 | 3,5 |
| 191706 | M4  | 12 | 16 | 8  | 9,5 | 3,5 |
| 191707 | M4  | 16 | 16 | 8  | 9,5 | 3,5 |
| 191708 | M5  | 10 | 20 | 10 | 12  | 4   |
| 191709 | M5  | 12 | 20 | 10 | 12  | 4   |
| 191710 | M5  | 16 | 20 | 10 | 12  | 4   |
| 191711 | M5  | 20 | 20 | 10 | 12  | 4   |
| 191712 | M6  | 10 | 24 | 12 | 15  | 5   |
| 191713 | M6  | 12 | 24 | 12 | 15  | 5   |
| 191714 | M6  | 16 | 24 | 12 | 15  | 5   |
| 191715 | M6  | 20 | 24 | 12 | 15  | 5   |
| 191716 | M6  | 25 | 24 | 12 | 15  | 5   |
| 191717 | M8  | 16 | 30 | 16 | 18  | 6   |
| 191718 | M8  | 20 | 30 | 16 | 18  | 6   |
| 191719 | M8  | 25 | 30 | 16 | 18  | 6   |
| 191720 | M8  | 30 | 30 | 16 | 18  | 6   |
| 191721 | M10 | 20 | 36 | 20 | 23  | 8   |
| 191722 | M10 | 25 | 36 | 20 | 23  | 8   |
| 191723 | M10 | 30 | 36 | 20 | 23  | 8   |
| 191724 | M10 | 40 | 36 | 20 | 23  | 8   |

| code   | d1 | L  | d2 | d3 | h  | k |
|--------|----|----|----|----|----|---|
| 191751 | M4 | 8  | 16 | 8  | 10 | 4 |
| 191752 | M4 | 10 | 16 | 8  | 10 | 4 |
| 191753 | M4 | 12 | 16 | 8  | 10 | 4 |
| 191754 | M4 | 16 | 16 | 8  | 10 | 4 |
| 191755 | M5 | 10 | 20 | 10 | 12 | 4 |
| 191756 | M5 | 12 | 20 | 10 | 12 | 4 |
| 191757 | M5 | 16 | 20 | 10 | 12 | 4 |
| 191758 | M5 | 20 | 20 | 10 | 12 | 4 |
| 191759 | M5 | 25 | 20 | 10 | 12 | 4 |
| 191760 | M6 | 12 | 24 | 12 | 15 | 5 |
| 191761 | M6 | 16 | 24 | 12 | 15 | 5 |
| 191762 | M6 | 20 | 24 | 12 | 15 | 5 |
| 191763 | M6 | 25 | 24 | 12 | 15 | 5 |
| 191764 | M6 | 30 | 24 | 12 | 15 | 5 |
| 191765 | M8 | 16 | 30 | 16 | 18 | 6 |
| 191766 | M8 | 20 | 30 | 16 | 18 | 6 |
| 191767 | M8 | 25 | 30 | 16 | 18 | 6 |
| 191768 | M8 | 30 | 30 | 16 | 18 | 6 |

# DIN 653

VIS MOLETEE BASSE

VLAKKE KARTELSCHROEF



EXEC. : tournée, surfaces planes usinées  
UITV. : gedraaid, vlakke gedeelten bewerkt

MAT : acier - staal 8.8

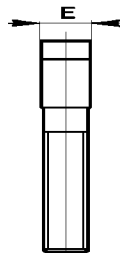
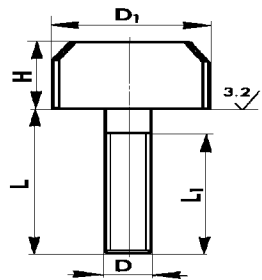
| code   | d1 | l  | d2 | k   |
|--------|----|----|----|-----|
| 191505 | M3 | 6  | 12 | 2,5 |
| 191506 | M3 | 8  | 12 | 2,5 |
| 191507 | M3 | 10 | 12 | 2,5 |
| 191508 | M3 | 16 | 12 | 2,5 |
| 191509 | M3 | 20 | 12 | 2,5 |
| 191512 | M4 | 8  | 16 | 3,5 |
| 191513 | M4 | 10 | 16 | 3,5 |
| 191514 | M4 | 12 | 16 | 3,5 |
| 191515 | M4 | 16 | 16 | 3,5 |
| 191516 | M4 | 20 | 16 | 3,5 |
| 191517 | M4 | 25 | 16 | 3,5 |
| 191520 | M5 | 10 | 20 | 4   |
| 191521 | M5 | 12 | 20 | 4   |
| 191522 | M5 | 16 | 20 | 4   |
| 191523 | M5 | 20 | 20 | 4   |
| 191524 | M5 | 25 | 20 | 4   |
| 191526 | M5 | 30 | 20 | 4   |

|        |     |    |    |   |
|--------|-----|----|----|---|
| 191530 | M6  | 12 | 24 | 5 |
| 191531 | M6  | 16 | 24 | 5 |
| 191532 | M6  | 20 | 24 | 5 |
| 191533 | M6  | 25 | 24 | 5 |
| 191534 | M6  | 30 | 24 | 5 |
| 191535 | M6  | 40 | 24 | 5 |
| 191540 | M8  | 16 | 30 | 6 |
| 191541 | M8  | 20 | 30 | 6 |
| 191542 | M8  | 25 | 30 | 6 |
| 191543 | M8  | 30 | 30 | 6 |
| 191544 | M8  | 35 | 30 | 6 |
| 191545 | M8  | 40 | 30 | 6 |
| 191550 | M10 | 20 | 36 | 8 |
| 191551 | M10 | 25 | 36 | 8 |
| 191552 | M10 | 30 | 36 | 8 |
| 191553 | M10 | 35 | 36 | 8 |
| 191554 | M10 | 40 | 36 | 8 |

# 653-1

VIS VERROU

GRENDELSCHROEF



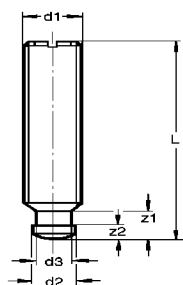
| CODE       | D    | D1 | E    | H  | L  | L1 | $\frac{L}{L1}$ |
|------------|------|----|------|----|----|----|----------------|
| 5653060000 | M 6  | 20 | 6,5  | 14 | 30 | 25 | 20             |
| 5653080000 | M 8  | 25 | 8,5  | 16 | 40 | 30 | 38             |
| 5653100000 | M 10 | 28 | 10,5 | 16 | 50 | 40 | 62             |
| 5653120000 | M 12 | 32 | 12,5 | 20 | 60 | 50 | 100            |

MAT.: acier de décolletage bruni  
- gebruineerd schroevenstaal

# DIN 6332

VIS POUR PATIN

SPANSCHROEF VOOR DRUKVOET



EXECUTION : tournée avec fente

UITVOERING : gedraaid met gleuf

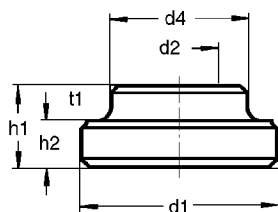
| code   | d1 | L  | d2  | 192010 | 192010 | 50  | 8 | 192020 | M16 | 65  | 12   |
|--------|----|----|-----|--------|--------|-----|---|--------|-----|-----|------|
| 192001 | M6 | 30 | 4,5 | 192011 | M10    | 55  | 8 | 192021 | M16 | 70  | 12   |
| 192002 | M6 | 35 | 4,5 | 192012 | M10    | 60  | 8 | 192022 | M16 | 80  | 12   |
| 192003 | M6 | 40 | 4,5 | 192013 | M10    | 65  | 8 | 192023 | M16 | 100 | 12   |
| 192004 | M6 | 50 | 4,5 | 192014 | M10    | 80  | 8 | 192024 | M16 | 125 | 12   |
| 192005 | M8 | 35 | 6   | 192015 | M12    | 60  | 8 | 192025 | M20 | 80  | 15,5 |
| 192006 | M8 | 40 | 6   | 192016 | M12    | 65  | 8 | 192026 | M20 | 90  | 15,5 |
| 192007 | M8 | 45 | 6   | 192017 | M12    | 70  | 8 | 192027 | M20 | 100 | 15,5 |
| 192008 | M8 | 50 | 6   | 192018 | M12    | 80  | 8 | 192028 | M20 | 125 | 15,5 |
| 192009 | M8 | 60 | 6   | 192019 | M12    | 100 | 8 | 192029 | M20 | 150 | 15,5 |

MAT : acier - 5.8  
staal - 5.8

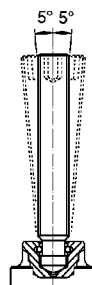
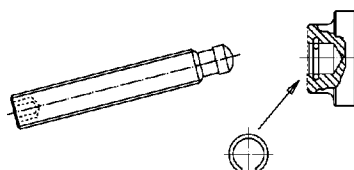
# DIN 6331

PATIN A CIRCLIPS

DRUKVOET MET RINGVEER



MAT : acier - staal



| code  | d1  | d1 | 51408 | M18 | 34 |
|-------|-----|----|-------|-----|----|
| 51402 | M6  | 14 | 51409 | M20 | 37 |
| 51403 | M8  | 18 | 51423 | M22 | 40 |
| 51420 | M10 | 22 | 51410 | M22 | 40 |
| 51404 | M10 | 22 | 51411 | M24 | 45 |
| 51421 | M12 | 25 | 51412 | M27 | 50 |
| 51405 | M12 | 25 | 51413 | M30 | 58 |
| 51422 | M14 | 28 | 51414 | M36 | 68 |
| 51406 | M14 | 28 | 51415 | M42 | 80 |
| 51407 | M16 | 31 | 51416 | M48 | 92 |

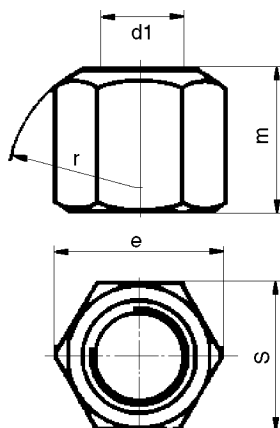
EXECUTION : tournée, trempée, circlips sertis

UITVOERING : gedraaid, gehard, ingebouwde ringveer

# DIN 6330B

ECROUS A SIX PANS

ZESKANTMOEREN



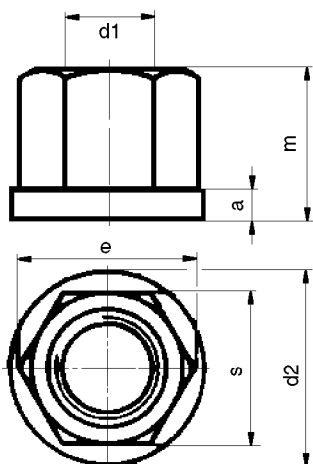
EXEC : fraisés traités résistance 10 - acier INOX

UITV : gesmeed, veredeld, vastheid 10 - RVS staal



| CODE       | d1  | m  | s  | $\frac{L}{L1}$ |
|------------|-----|----|----|----------------|
| 5769060000 | M6  | 9  | 10 | 5              |
| 5769080000 | M8  | 12 | 13 | 7              |
| 5769100000 | M10 | 15 | 17 | 15             |
| 5769120000 | M12 | 18 | 19 | 20             |

| code  | d1  | s      | e    | m (1,5 d) | r  | $\frac{L}{L1}$ |
|-------|-----|--------|------|-----------|----|----------------|
| 51301 | M6  | 10     | 11,5 | 9         | 9  | 5              |
| 51302 | M8  | 13     | 15,0 | 12        | 12 | 9              |
| 51320 | M10 | 16     | 18,2 | 15        | 15 | 14             |
| 51303 | M10 | *** 17 | 19,6 | 15        | 15 | 20             |
| 51321 | M12 | 18     | 20,4 | 18        | 17 | 20             |
| 51304 | M12 | *** 19 | 21,9 | 18        | 17 | 28             |
| 51322 | M14 | 21     | 23,8 | 21        | 20 | 34             |
| 51305 | M14 | *** 22 | 25,4 | 21        | 20 | 45             |
| 51306 | M16 | 24     | 27,7 | 24        | 22 | 58             |
| 51307 | M18 | 27     | 31,2 | 27        | 24 | 83             |
| 51308 | M20 | 30     | 34,6 | 30        | 27 | 110            |
| 51323 | M22 | 34     | 38,6 | 33        | 30 | 185            |
| 51309 | M22 | *** 32 | 36,9 | 33        | 30 | 130            |
| 51310 | M24 | 36     | 41,6 | 36        | 32 | 195            |
| 51311 | M27 | 41     | 47,3 | 40        | 36 | 280            |
| 51312 | M30 | 46     | 53,1 | 45        | 41 | 405            |
| 51313 | M36 | 55     | 63,5 | 54        | 50 | 715            |
| 51314 | M42 | 65     | 75,0 | 63        | 58 | 1170           |
| 51315 | M48 | 75     | 86,5 | 72        | 67 | 1800           |



| code  | code * | d1  | s      | e    | a | d2 |
|-------|--------|-----|--------|------|---|----|
| 51402 | 51430  | M6  | 10     | 11,5 | 3 | 14 |
| 51403 | 81431  | M8  | 13     | 15   | 4 | 18 |
| 51420 | 51432  | M10 | 16     | 18,2 | 4 | 22 |
| 51404 | -      | M10 | *** 17 | 19,6 | 4 | 22 |
| 51421 | 51433  | M12 | 18     | 20,4 | 4 | 25 |
| 51405 | -      | M12 | *** 19 | 21,9 | 4 | 25 |
| 51422 | -      | M14 | 21     | 23,8 | 5 | 28 |
| 51406 | -      | M14 | *** 22 | 25,4 | 5 | 28 |
| 51407 | 51435  | M16 | 24     | 27,7 | 5 | 31 |

|       |       |     |        |      |    |    |
|-------|-------|-----|--------|------|----|----|
| 51408 | 51436 | M18 | 27     | 31,2 | 5  | 34 |
| 51409 | 51437 | M20 | 30     | 34,6 | 6  | 37 |
| 51423 | -     | M22 | 34     | 38,6 | 6  | 40 |
| 51410 | -     | M22 | *** 32 | 36,9 | 6  | 40 |
| 51411 | 51439 | M24 | 36     | 41,6 | 6  | 45 |
| 51412 | 51441 | M27 | 41     | 47,3 | 8  | 50 |
| 51413 | 51442 | M30 | 46     | 53,1 | 8  | 58 |
| 51414 | -     | M36 | 55     | 63,5 | 10 | 68 |
| 51415 | -     | M42 | 65     | 75   | 12 | 80 |
| 51416 | -     | M48 | 75     | 86,5 | 14 | 92 |



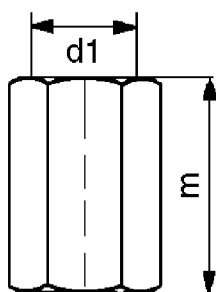
EXEC : fraisés traités résistance 10 - acier INOX  
 UITV : gesmeed, veredeld, vastheid 10 - RVS staal

| CODE       | d1  | d2 | m  | a   | s  | $\frac{d_2}{d_1}$ |
|------------|-----|----|----|-----|----|-------------------|
| 5768060000 | M6  | 14 | 9  | 2,5 | 10 | 5                 |
| 5768080000 | M8  | 18 | 12 | 3,5 | 13 | 12                |
| 5768100000 | M10 | 22 | 15 | 4,0 | 17 | 25                |
| 5768120000 | M12 | 25 | 18 | 4,0 | 19 | 35                |

6334

ECROUS ALLONGES

VERLENGMOEREN



EXEC : traités, résistance 10  
 UITV : veredeld, vastheid 10

HAUTEUR = 3d  
 HOOGTE = 3d

FIXATION DE GOUJONS ET BOULONS  
 SAMENBOUTEN VAN 2 DRAADEINDEN

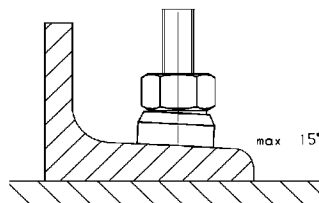
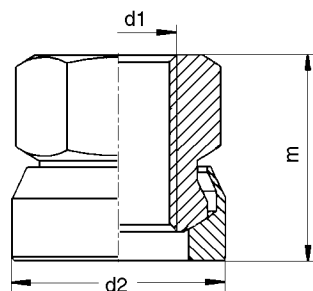
| code  | d1  | s      | e    |
|-------|-----|--------|------|
| 51500 | M6  | 10     | 11,5 |
| 51501 | M8  | 13     | 15,0 |
| 51520 | M10 | 16     | 17,8 |
| 51502 | M10 | *** 17 | 19,6 |
| 51521 | M12 | 18     | 20,0 |
| 51503 | M12 | *** 19 | 21,9 |
| 51522 | M14 | 21     | 23,4 |
| 51504 | M14 | *** 22 | 25,4 |
| 51505 | M16 | 24     | 27,7 |

|       |     |        |      |
|-------|-----|--------|------|
| 51506 | M18 | 27     | 31,2 |
| 51507 | M20 | 30     | 34,6 |
| 51523 | M22 | 34     | 37,7 |
| 51508 | M22 | *** 32 | 36,9 |
| 51509 | M24 | 36     | 41,6 |
| 51510 | M27 | 41     | 47,3 |
| 51511 | M30 | 46     | 53,1 |
| 51512 | M36 | 55     | 63,5 |
| 51513 | M42 | 65     | 75,0 |
| 51514 | M48 | 75     | 86,5 |

1963

PIED A ROTULE petite base acier

ZESKANTMOER MET KOGELZITTING



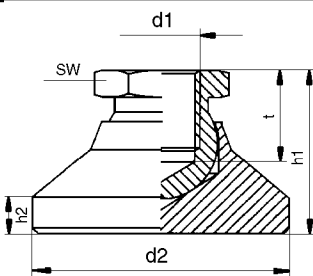
| CODE   | d1   | d2 | m    | s  |
|--------|------|----|------|----|
| 196301 | M 8  | 17 | 14   | 13 |
| 196302 | M 10 | 21 | 17,5 | 17 |
| 196303 | M 12 | 24 | 21,5 | 19 |
| 196304 | M 16 | 30 | 28   | 24 |
| 196305 | M 20 | 36 | 35   | 30 |
| 196306 | M 24 | 44 | 42,5 | 36 |

MAT: en acier rotule trempée et brunie, pied en acier brunie.  
 MAT: kogelement gefard en gebruind uit gebruind staal.

1963G

PIED A ROTULE grande base

ZESKANTMOER MET KOGELZITTING



grande base acier - grote basis staal

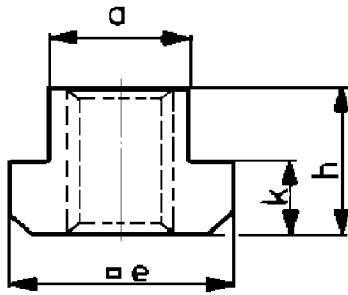
base delrin sur demande  
 basis delrin op aanvraag

| CODE   | d1   | d2 | SW | h1 | h2  | t    |
|--------|------|----|----|----|-----|------|
| 196331 | M 6  | 20 | 10 | 14 | 2,5 | 5    |
| 196332 | M 8  | 25 | 13 | 18 | 4,0 | 7    |
| 196333 | M 10 | 32 | 17 | 22 | 5,0 | 9    |
| 196334 | M 12 | 40 | 19 | 26 | 6,0 | 11   |
| 196335 | M 16 | 50 | 24 | 32 | 7,0 | 13,5 |
| 196336 | M 20 | 60 | 30 | 42 | 8,0 | 17   |
| 196337 | M24  | 60 | 36 | 45 | 9,5 | 19   |

# DIN 508

TASSEAUX POUR RAINURES EN "T"

"T"- MOEREN

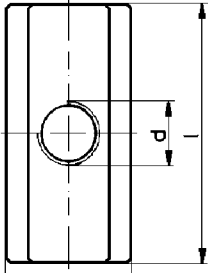


| CODE  | d x a    | a    | e  | h  | k  | $\frac{h}{k}$ | CODE  | d x a    | a    | e  | h  | k  | $\frac{h}{k}$ |
|-------|----------|------|----|----|----|---------------|-------|----------|------|----|----|----|---------------|
| 50901 | M5 X 6   | 5,7  | 10 | 8  | 4  | 4             | 50908 | M18 X 20 | 19,7 | 32 | 24 | 12 | 110           |
| 50902 | M6 X 8   | 7,7  | 13 | 10 | 6  | 7             | 50946 | M16 X 22 | 21,7 | 35 | 28 | 14 | 150           |
| 50903 | M8 X 10  | 9,7  | 15 | 12 | 6  | 12            | 50950 | M18 X 22 | 21,7 | 35 | 28 | 14 | 150           |
| 50941 | M8 X 12  | 11,7 | 18 | 14 | 7  | 20            | 50909 | M20 X 22 | 21,7 | 35 | 28 | 14 | 150           |
| 50904 | M10 X 12 | 11,7 | 18 | 14 | 7  | 20            | 50947 | M16 X 24 | 23,7 | 40 | 32 | 16 | 260           |
| 50942 | M8 X 14  | 13,7 | 22 | 16 | 8  | 30            | 50923 | M20 X 24 | 23,7 | 40 | 32 | 16 | 235           |
| 50952 | M10 X 14 | 13,7 | 22 | 16 | 8  | 30            | 50910 | M22 X 24 | 23,7 | 40 | 32 | 16 | 220           |
| 50905 | M12 X 14 | 13,7 | 22 | 16 | 8  | 30            | 50948 | M16 X 28 | 27,7 | 44 | 36 | 18 | 310           |
| 50943 | M8 X 16  | 15,7 | 25 | 18 | 9  | 50            | 50949 | M20 X 28 | 27,7 | 44 | 36 | 18 | 310           |
| 50953 | M10 X 16 | 15,7 | 25 | 18 | 9  | 60            | 50951 | M22 X 28 | 27,7 | 44 | 36 | 18 | 310           |
| 50920 | M12 X 16 | 15,7 | 25 | 18 | 9  | 50            | 50911 | M24 X 28 | 27,7 | 44 | 36 | 18 | 310           |
| 50906 | M14 X 16 | 15,7 | 25 | 18 | 9  | 50            | 50924 | M24 X 30 | 29,7 | 48 | 38 | 19 | 440           |
| 50944 | M8 X 18  | 17,7 | 28 | 20 | 10 | 91            | 50912 | M27 X 32 | 31,6 | 50 | 40 | 20 | 460           |
| 50954 | M10 X 18 | 17,7 | 28 | 20 | 10 | 87            | 50925 | M24 X 36 | 35,6 | 54 | 44 | 22 | 700           |

# 508 L

TASSEAUX POUR RAINURES EN "T"

"T"- MOEREN



MAT. : traités, résistance 10  
veredeld, vastheid 10

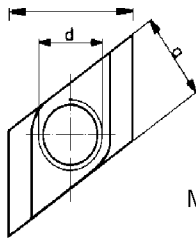
Série longue - Lange vorm

| code  | d x a    | a    | e  | l   | h  | k  | $\frac{h}{k}$ |
|-------|----------|------|----|-----|----|----|---------------|
| 50999 | M5 x 6   | 5,7  | 10 | 20  | 8  | 4  | 8             |
| 51000 | M6 x 8   | 7,7  | 13 | 26  | 10 | 6  | 14            |
| 51001 | M8 x 10  | 9,7  | 15 | 30  | 12 | 6  | 30            |
| 51002 | M10 x 12 | 11,7 | 18 | 36  | 14 | 7  | 50            |
| 51003 | M12 x 14 | 13,7 | 22 | 44  | 16 | 8  | 82            |
| 51004 | M14 x 16 | 15,7 | 25 | 50  | 18 | 9  | 120           |
| 51005 | M16 x 18 | 17,7 | 28 | 56  | 20 | 10 | 170           |
| 51006 | M18 x 20 | 19,7 | 32 | 64  | 24 | 12 | 260           |
| 51007 | M20 x 22 | 21,7 | 35 | 70  | 28 | 14 | 360           |
| 51008 | M24 x 28 | 27,7 | 44 | 88  | 36 | 18 | 730           |
| 51009 | M30 x 36 | 35,6 | 54 | 108 | 44 | 22 | 1390          |

# 510

TASSEAUX LOSANGES "RHOMBUS"

"T" - MOEREN "RHOMBUS"



MAT. : acier traité - staal veredeld

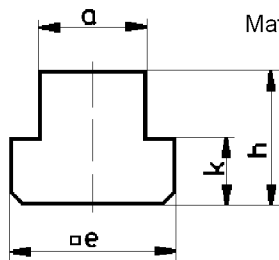
En fonction de sa portée réduite, la capacité de serrage est diminuée par rapport au DIN 508.

| code  | d x a    | Résistance Vastheidsklassen | a    | e  | h  | k  | $\frac{h}{k}$ |
|-------|----------|-----------------------------|------|----|----|----|---------------|
| 51101 | M10 x 12 | 8                           | 11,7 | 18 | 14 | 7  | 14            |
| 51131 | M10 x 14 | 8                           | 13,7 | 22 | 16 | 8  | 27            |
| 51102 | M12 x 14 | 8                           | 13,7 | 22 | 16 | 8  | 22            |
| 51103 | M14 x 16 | 6                           | 15,7 | 25 | 18 | 9  | 33            |
| 51132 | M10 x 18 | 8                           | 17,7 | 28 | 20 | 10 | 64            |
| 51104 | M16 x 18 | 6                           | 17,7 | 28 | 20 | 10 | 46            |
| 51123 | M16 x 20 | 8                           | 19,7 | 32 | 24 | 12 | 79            |
| 51105 | M18 x 20 | 6                           | 19,7 | 32 | 24 | 12 | 70            |
| 51133 | M16 x 22 | 8                           | 21,7 | 35 | 28 | 14 | 119           |
| 51106 | M20 x 22 | 6                           | 21,7 | 35 | 28 | 14 | 98            |
| 51134 | M16 x 28 | 8                           | 27,7 | 44 | 36 | 18 | 278           |
| 51135 | M20 x 28 | 8                           | 27,7 | 44 | 36 | 18 | 248           |
| 51107 | M24 x 28 | 6                           | 27,7 | 44 | 36 | 18 | 215           |
| 51108 | M30 x 36 | 6                           | 35,6 | 54 | 44 | 22 | 430           |
| 51109 | M36 x 42 | 6                           | 41,6 | 65 | 52 | 26 | 690           |

# 508 R

TASSEAUX EBAUCHES

"T" - MOEREN HALFFABRIKAAT



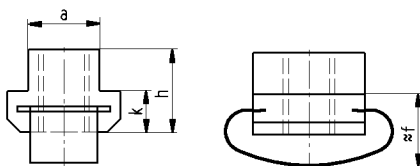
Mat : acier de traitement 0,35 - 0,45%  
veredeld staal 0,35 - 0,45% C

| code  | a  | e    | h  | k  | $\frac{h}{k}$ | code | a     | e  | h    | k  | $\frac{h}{k}$ |    |      |
|-------|----|------|----|----|---------------|------|-------|----|------|----|---------------|----|------|
| 51201 | 6  | 5,7  | 10 | 8  | 4             | 4    | 51209 | 22 | 21,7 | 35 | 28            | 14 | 210  |
| 51202 | 8  | 7,7  | 13 | 10 | 6             | 10   | 51210 | 24 | 23,7 | 40 | 32            | 16 | 300  |
| 51203 | 10 | 9,7  | 15 | 12 | 6             | 16   | 51211 | 28 | 27,7 | 44 | 36            | 18 | 430  |
| 51204 | 12 | 11,7 | 18 | 14 | 7             | 27   | 51216 | 32 | 31,7 | 50 | 40            | 20 | 630  |
| 51205 | 14 | 13,7 | 22 | 16 | 8             | 50   | 51212 | 36 | 35,6 | 54 | 44            | 22 | 800  |
| 51206 | 16 | 15,7 | 25 | 18 | 9             | 70   | 51213 | 42 | 41,6 | 65 | 52            | 26 | 1400 |
| 51207 | 18 | 17,7 | 28 | 20 | 10            | 95   | 51214 | 48 | 47,6 | 75 | 60            | 30 | 2100 |
| 51208 | 20 | 19,7 | 32 | 24 | 12            | 150  | 51215 | 54 | 53,6 | 85 | 70            | 34 | 3150 |

# 508 F

TASSEAUX POUR RAINURES AVEC RESSORT

T - GLEUFMOER MET VEER (GEPATENT)



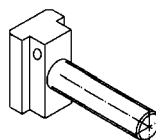
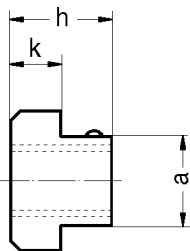
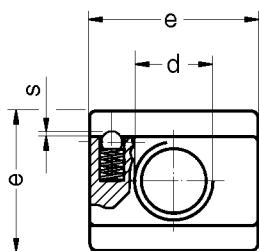
Mat : traités, résistance 10  
veredeld, vastheidsklasse 10  
Ressort: acier spécial inoxydable  
Veer: roestvrij edelstaal

| code  | d x a    | a    | e  | f    | h  | k  | l  | $\frac{h}{k}$ |
|-------|----------|------|----|------|----|----|----|---------------|
| 51231 | M8 x 12  | 11,7 | 18 | 12,5 | 14 | 7  | 31 | 20            |
| 51232 | M10 x 12 | 11,7 | 18 | 12,5 | 14 | 7  | 31 | 20            |
| 51233 | M8 x 14  | 13,7 | 22 | 13,5 | 16 | 8  | 33 | 30            |
| 51234 | M10 x 14 | 13,7 | 22 | 13,5 | 16 | 8  | 33 | 30            |
| 51235 | M12 x 14 | 13,7 | 22 | 13,5 | 16 | 8  | 33 | 30            |
| 51236 | M8 x 16  | 15,7 | 25 | 15,5 | 18 | 9  | 42 | 50            |
| 51237 | M10 x 16 | 15,7 | 25 | 15,5 | 18 | 9  | 42 | 50            |
| 51240 | M10 x 18 | 17,7 | 28 | 17,5 | 20 | 10 | 43 | 87            |
| 51243 | M16 x 18 | 17,7 | 28 | 17,5 | 20 | 10 | 43 | 70            |
| 51251 | M20 x 22 | 21,7 | 35 | 21,5 | 28 | 14 | 56 | 150           |

# 508 B

TASSEAUX AVEC BILLE

KOGELT-GLEUFMOER



| code  | d   | a  | e    | h  | k  | s  |      |
|-------|-----|----|------|----|----|----|------|
| 51281 | M8  | 10 | 9,6  | 15 | 12 | 6  | 0,65 |
| 51282 | M10 | 12 | 11,6 | 18 | 14 | 7  | 0,80 |
| 51283 | M12 | 14 | 13,6 | 22 | 16 | 8  | 0,90 |
| 51284 | M16 | 18 | 17,6 | 28 | 20 | 10 | 1,00 |
| 51285 | M20 | 22 | 21,6 | 35 | 28 | 14 | 1,60 |

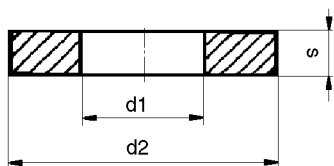
Mat : traités, résistance 10  
veredeld, vastheidsklasse 10

# DIN 6340

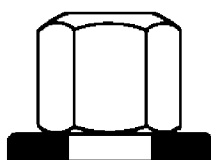
RONDELLES

ONDERLEGRINGEN

EXEC : traitées  
UITV : gehard



DIN 6330B



DIN 6340

| code  |     | d1 | d2 | s | gr |
|-------|-----|----|----|---|----|
| 51601 | M6  | 6  | 17 | 3 | 5  |
| 51602 | M8  | 8  | 23 | 4 | 10 |
| 51603 | M10 | 11 | 28 | 4 | 16 |
| 51604 | M12 | 13 | 35 | 5 | 35 |
| 51605 | M14 | 15 | 40 | 5 | 40 |
| 51606 | M16 | 17 | 45 | 6 | 60 |
| 51607 | M18 | 19 | 45 | 6 | 60 |

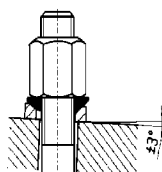
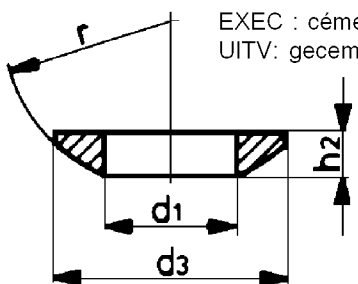
| code  |     | d1 | d2  | s  | gr  |
|-------|-----|----|-----|----|-----|
| 51608 | M20 | 21 | 50  | 6  | 73  |
| 51609 | M22 | 23 | 50  | 8  | 92  |
| 51610 | M24 | 25 | 60  | 8  | 170 |
| 51611 | M27 | 28 | 68  | 10 | 210 |
| 51612 | M30 | 31 | 68  | 10 | 230 |
| 51613 | M36 | 38 | 80  | 12 | 350 |
| 51614 | M42 | 44 | 100 | 15 | 670 |

# 6319 C

RONDELLES ARTICULEES CONVEXES

KEGELVORMIGE SCHIJVEN

EXEC : cémentées, trempées  
UITV : gecementeerd, gehard



| CODE  | M    | d1  | d3 | h2  | r  | gr  |
|-------|------|-----|----|-----|----|-----|
| 51698 | M 4  | 4,4 | 10 | 2,2 | 7  | 1   |
| 51699 | M 5  | 5,4 | 11 | 2,3 | 8  | 1   |
| 51700 | M 6  | 6,4 | 12 | 2,3 | 9  | 1   |
| 51701 | M 8  | 8,4 | 17 | 3,2 | 12 | 2,5 |
| 51702 | M 10 | 11  | 21 | 4,0 | 15 | 5   |
| 51703 | M 12 | 13  | 24 | 4,6 | 17 | 7   |
| 51704 | M 14 | 15  | 28 | 5,0 | 22 | 10  |
| 51705 | M 16 | 17  | 30 | 5,3 | 22 | 12  |

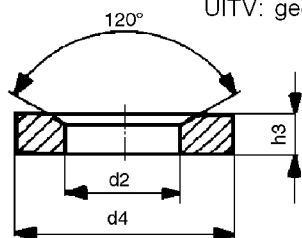
| CODE  | M    | d1 | d3  | h2   | r  | gr   |
|-------|------|----|-----|------|----|------|
| 51706 | M 20 | 21 | 36  | 6,3  | 27 | 21   |
| 51707 | M 24 | 25 | 44  | 8,2  | 32 | 42   |
| 51708 | M 30 | 31 | 56  | 11,2 | 41 | 87   |
| 51709 | M 36 | 37 | 68  | 14,0 | 50 | 184  |
| 51710 | M 42 | 43 | 78  | 17,0 | 58 | 297  |
| 51711 | M 48 | 50 | 92  | 21,0 | 67 | 525  |
| 51712 | M56  | 58 | 103 | 23,0 | 79 | 760  |
| 51713 | M64  | 66 | 120 | 27   | 93 | 1220 |

# 6319 D

RONDELLES ARTICULEES CONCAVES

KEGELVORMIGE ZITTINGEN

EXEC : cémentées, trempées  
UITV : gecementeerd, gehard



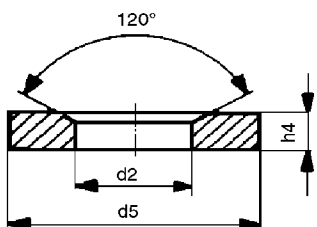
| CODE  | M    | d2   | d4 | h3  | gr  |
|-------|------|------|----|-----|-----|
| 51798 | M 4  | 5,1  | 10 | 2,5 | 1   |
| 51799 | M 5  | 6,1  | 11 | 2,5 | 2   |
| 51800 | M 6  | 7,1  | 12 | 2,8 | 1,5 |
| 51801 | M 8  | 9,6  | 17 | 3,5 | 4   |
| 51802 | M 10 | 12,0 | 21 | 4,2 | 6,5 |
| 51803 | M 12 | 14,2 | 24 | 5,0 | 10  |
| 51804 | M 14 | 16,5 | 28 | 5,6 | 18  |
| 51805 | M 16 | 19,0 | 30 | 6,2 | 19  |

| CODE  | M    | d2   | d4  | h3   | gr   |
|-------|------|------|-----|------|------|
| 51806 | M 20 | 23,2 | 36  | 7,5  | 32   |
| 51807 | M 24 | 28,0 | 44  | 9,5  | 63   |
| 51808 | M 30 | 35,0 | 56  | 12,0 | 133  |
| 51809 | M 36 | 42,0 | 68  | 15,0 | 236  |
| 51810 | M 42 | 49,0 | 78  | 18,0 | 365  |
| 51811 | M 48 | 56,0 | 92  | 22,0 | 641  |
| 51812 | M56  | 65,0 | 103 | 25,0 | 920  |
| 51813 | M64  | 75,0 | 120 | 30,0 | 1430 |

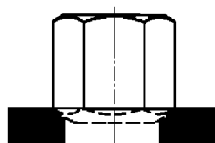
# 6319 G

RONDELLES ARTICULEES CONCAVES

KEGELVORMIGE ZITTINGEN



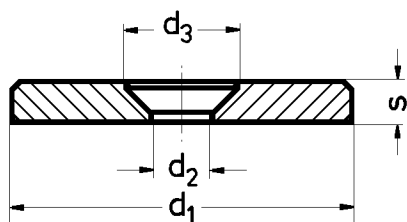
DIN 6330B



DIN 6319G

| CODE  | M    | d2   | d5 | h4 | gr  |
|-------|------|------|----|----|-----|
| 51900 | M 6  | 7,1  | 17 | 4  | 5,5 |
| 51901 | M 8  | 9,6  | 23 | 4  | 13  |
| 51902 | M 10 | 12,0 | 28 | 5  | 19  |
| 51903 | M 12 | 14,2 | 35 | 5  | 37  |
| 51904 | M 14 | 16,5 | 40 | 5  | 48  |
| 51905 | M 16 | 19,0 | 45 | 6  | 70  |

| CODE  | M    | d2   | d5  | h4 | gr  |
|-------|------|------|-----|----|-----|
| 51906 | M 20 | 23,2 | 50  | 8  | 94  |
| 51907 | M 24 | 28,0 | 60  | 10 | 169 |
| 51908 | M 30 | 35,0 | 68  | 10 | 218 |
| 51909 | M 36 | 42,0 | 80  | 12 | 350 |
| 51910 | M 42 | 49,0 | 100 | 15 | 640 |
| 51911 | M 48 | 56,0 | 110 | 17 | 830 |

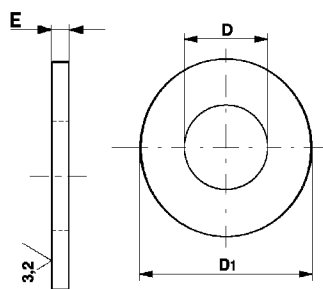


| code   | d1 | d2  | d3 | s   | pour vis<br>voor schroef<br>DIN 7991 |
|--------|----|-----|----|-----|--------------------------------------|
| 197005 | 16 | 4,3 | 8  | 3   | M4                                   |
| 197006 | 20 | 4,3 | 8  | 3   | M4                                   |
| 197007 | 22 | 5,3 | 10 | 3,5 | M5                                   |
| 197008 | 25 | 5,3 | 10 | 3,5 | M5                                   |
| 197009 | 28 | 5,3 | 10 | 3,5 | M5                                   |
| 197010 | 32 | 6,4 | 12 | 4   | M6                                   |
| 197011 | 36 | 6,4 | 12 | 4   | M6                                   |
| 197012 | 40 | 6,4 | 12 | 5   | M6                                   |
| 197013 | 45 | 6,4 | 12 | 6   | M6                                   |
| 197014 | 52 | 6,4 | 12 | 6   | M6                                   |

775

RONDELLES PLATES INOX

ONDERLEGRINGEN RVS



MAT : acier INOX - roestvrij staal

TYPE MU



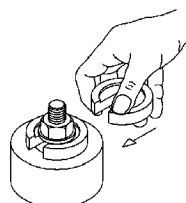
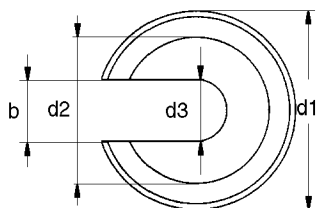
| code       | D    | M   | D1 | E   | gr  |
|------------|------|-----|----|-----|-----|
| 5775005000 | 5,3  | M 5 | 12 | 1   | 5   |
| 5775006000 | 6,4  | M 6 | 14 | 1,2 | 9   |
| 5775008000 | 8,4  | M 8 | 16 | 1,5 | 12  |
| 5775010000 | 10,5 | M10 | 22 | 2   | 23  |
| 5775012000 | 13   | M12 | 24 | 2,5 | 40  |
| 5775014000 | 15   | M14 | 30 | 2,5 | 49  |
| 5775016000 | 17   | M16 | 32 | 3   | 67  |
| 5775020000 | 21   | M20 | 40 | 3   | 120 |
| 5775024000 | 25   | M24 | 50 | 4   | 230 |
| 5775030000 | 31   | M30 | 60 | 4   | 450 |
| 5775036000 | 37   | M36 | 70 | 5   | 690 |

DIN 6372

RONDELLE EN "C"

"C" RONDSEL

MAT : acier bruni  
UITV : staal, gebruind

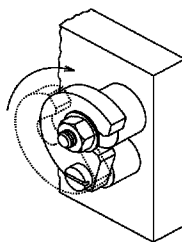
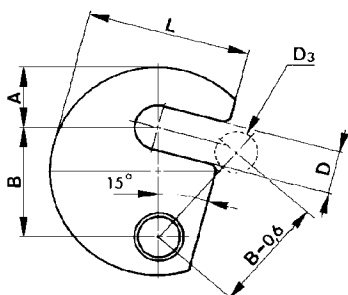


| code  | d3 | b    | d1  | d2 | l   | s  | gr  |
|-------|----|------|-----|----|-----|----|-----|
| 52001 | 6  | 6,4  | 22  | 16 | 0,8 | 6  | 10  |
| 52002 | 8  | 8,4  | 28  | 21 | 1   | 7  | 20  |
| 52003 | 10 | 10,5 | 34  | 25 | 1,2 | 8  | 40  |
| 52004 | 12 | 13   | 40  | 30 | 1,8 | 9  | 60  |
| 52006 | 16 | 17   | 56  | 37 | 1,8 | 12 | 170 |
| 52007 | 20 | 21   | 64  | 45 | 2   | 14 | 230 |
| 52008 | 24 | 25   | 75  | 52 | 2   | 16 | 320 |
| 52009 | 30 | 31   | 90  | 65 | 2   | 18 | 720 |
| 52010 | 36 | 37   | 100 | 75 | 2,5 | 20 | 870 |

DIN 6371

RONDELLE PIVOTANTE

ZWENKSCHIJF



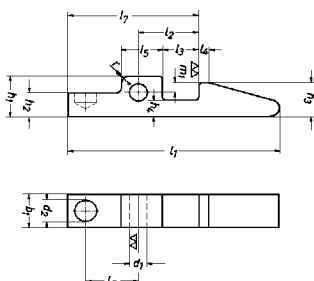
| code  | D3 | D    | D1 | D2 | B    | A  | L    | E    | gr  |
|-------|----|------|----|----|------|----|------|------|-----|
| 50301 | 6  | 7,5  | 38 | 9  | 19,6 | 11 | 29   | 9,8  | 60  |
| 50302 | 8  | 9,5  | 43 | 9  | 21,6 | 14 | 32,5 | 9,8  | 70  |
| 50303 | 10 | 11,5 | 48 | 9  | 23,6 | 17 | 36,5 | 9,8  | 90  |
| 50304 | 12 | 13,5 | 61 | 11 | 29,6 | 22 | 45   | 11,8 | 180 |
| 50306 | 16 | 17,5 | 68 | 11 | 33,6 | 25 | 50   | 11,8 | 220 |
| 50307 | 20 | 21,5 | 74 | 11 | 36,6 | 28 | 55   | 11,8 | 250 |
| 50308 | 24 | 25,5 | 82 | 11 | 40,6 | 32 | 62   | 15,8 | 430 |
| 50309 | 30 | 32   | 97 | 11 | 49   | 39 | 73   | 15,8 | 560 |

MAT : acier de décolletage bruni  
UITV :gebruineer schroevenstaal

DIN 6310

FERMOIR A RESSORT

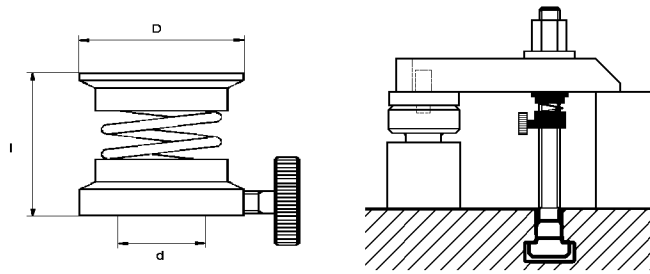
SLUITSTUK MET VEER



MAT : acier - staal c45k  
EXEC : bruni, extrémité trempée  
UITV : gebruineer, uiteinde gehard

| code   | l1 | b1 | b1     | d1 | d1 E9     | d2  | h1  | h2  | h3 | h4 | l2 | l2      | l3 | l4 | l5 | l6 | l7 | m1  |
|--------|----|----|--------|----|-----------|-----|-----|-----|----|----|----|---------|----|----|----|----|----|-----|
| 196101 | 45 | 8  | 0/-0,2 | 4  | +50 / +20 | 5   | 9,5 | 5,5 | 8  | 4  | 15 | +/- 0,1 | 10 | 2  | 9  | 11 | 30 | 2,5 |
| 196102 | 60 | 10 | 0/-0,2 | 5  | +50 / +20 | 6,3 | 12  | 7   | 10 | 5  | 20 | +/- 0,1 | 14 | 3  | 11 | 15 | 40 | 3   |
| 196103 | 80 | 14 | 0/-0,2 | 6  | +50 / +20 | 8   | 15  | 9   | 14 | 7  | 30 | +/- 0,1 | 22 | 5  | 14 | 23 | 60 | 5   |





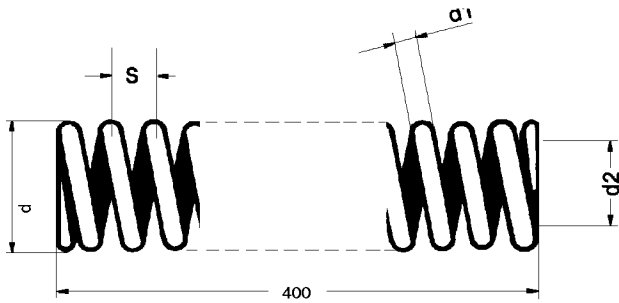
| code  | grandeur<br>grootte | D  | d    | l  | serrage maximum<br>maximale spanning | pour metrique<br>voor metric |
|-------|---------------------|----|------|----|--------------------------------------|------------------------------|
| 41801 | 1                   | 22 | 10,5 | 28 | 20                                   | m8 - m10                     |
| 41802 | 2                   | 26 | 14,5 | 32 | 22                                   | m12 - m14                    |
| 41803 | 3                   | 32 | 18,5 | 38 | 26                                   | m16 - m18                    |
| 41804 | 4                   | 38 | 22,5 | 40 | 28                                   | m20 - m22                    |
| 41805 | 5                   | 45 | 27,5 | 44 | 32                                   | m24 - m27                    |

avec vis d'arrêt en laiton - met messing vastzetbout

419-R

RESSORTS

VEREN

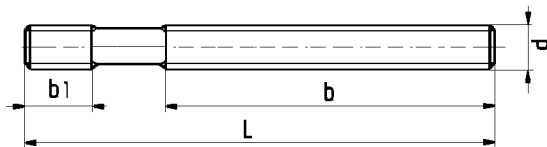


| code  | d    | d1  | d2   | s | ↳   |
|-------|------|-----|------|---|-----|
| 41901 | 8,5  | 1   | 6,5  | 3 | 3,2 |
| 41902 | 10,5 | 1   | 8,5  | 4 | 2,5 |
| 41903 | 12,9 | 1,2 | 10,5 | 4 | 3,5 |
| 41904 | 15,3 | 1,4 | 12,5 | 5 | 4,7 |
| 41905 | 17,5 | 1,5 | 14,5 | 6 | 5   |
| 41906 | 19,7 | 1,6 | 16,5 | 7 | 5,3 |
| 41907 | 22,1 | 1,8 | 18,5 | 7 | 6,8 |
| 41908 | 24,1 | 1,8 | 20,5 | 8 | 6,2 |

DIN 6379

GOUJONS

DRAADEINDEN

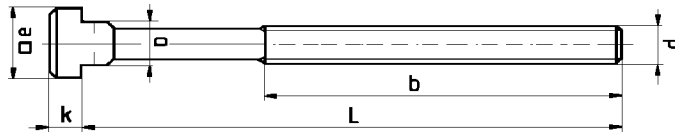


M 6 - M12 résistance  
veredeld op vastheid 10.9.

M 14 - M 42 résistance  
veredeld op vastheid 8.8.

| code  | d   | l   | b   | b1 | ↳   |
|-------|-----|-----|-----|----|-----|
| 50701 | M6  | 32  | 16  | 9  | 8   |
| 50702 | M6  | 40  | 20  | 9  | 9   |
| 50703 | M6  | 50  | 30  | 9  | 11  |
| 50704 | M6  | 63  | 40  | 9  | 14  |
| 50705 | M6  | 80  | 50  | 9  | 18  |
| 50707 | M8  | 40  | 20  | 11 | 10  |
| 50708 | M8  | 63  | 40  | 11 | 20  |
| 50815 | M8  | 90  | 50  | 11 | 27  |
| 50709 | M8  | 100 | 63  | 11 | 30  |
| 50711 | M8  | 160 | 100 | 11 | 45  |
| 50712 | M10 | 50  | 25  | 13 | 25  |
| 50713 | M10 | 80  | 50  | 13 | 40  |
| 50714 | M10 | 100 | 75  | 13 | 50  |
| 50715 | M10 | 125 | 75  | 13 | 62  |
| 50716 | M10 | 160 | 100 | 13 | 80  |
| 50717 | M10 | 200 | 125 | 13 | 100 |
| 50718 | M12 | 50  | 25  | 15 | 35  |
| 50719 | M12 | 63  | 32  | 15 | 45  |
| 50720 | M12 | 80  | 50  | 15 | 55  |
| 50721 | M12 | 100 | 63  | 15 | 70  |
| 50722 | M12 | 125 | 75  | 15 | 90  |
| 50723 | M12 | 160 | 100 | 15 | 113 |
| 50724 | M12 | 200 | 125 | 15 | 140 |
| 50725 | M14 | 63  | 32  | 17 | 80  |
| 50726 | M14 | 100 | 63  | 17 | 95  |
| 50727 | M14 | 160 | 100 | 17 | 150 |
| 50728 | M14 | 200 | 125 | 17 | 195 |
| 50729 | M14 | 250 | 160 | 17 | 240 |
| 50730 | M16 | 63  | 32  | 19 | 85  |
| 50731 | M16 | 80  | 50  | 19 | 105 |
| 50732 | M16 | 100 | 63  | 19 | 130 |
| 50733 | M16 | 125 | 75  | 19 | 160 |
| 50734 | M16 | 160 | 100 | 19 | 210 |
| 50735 | M16 | 200 | 125 | 19 | 280 |
| 50736 | M16 | 250 | 160 | 19 | 325 |
| 50737 | M16 | 315 | 180 | 19 | 425 |
| 50738 | M16 | 500 | 315 | 19 | 650 |
| 50739 | M18 | 80  | 50  | 23 | 130 |
| 50740 | M18 | 125 | 75  | 23 | 200 |
| 50741 | M18 | 160 | 100 | 23 | 255 |
| 50742 | M18 | 200 | 125 | 23 | 320 |
| 50743 | M18 | 250 | 150 | 23 | 400 |
| 50744 | M18 | 315 | 180 | 23 | 500 |

| code  | d   | l    | b   | b1 | ↳    |
|-------|-----|------|-----|----|------|
| 50746 | M20 | 80   | 32  | 27 | 185  |
| 50747 | M20 | 125  | 70  | 27 | 255  |
| 50748 | M20 | 160  | 100 | 27 | 330  |
| 50749 | M20 | 200  | 125 | 27 | 410  |
| 50750 | M20 | 250  | 160 | 27 | 510  |
| 50751 | M20 | 315  | 200 | 27 | 640  |
| 50753 | M20 | 400  | 250 | 27 | 815  |
| 50755 | M20 | 500  | 315 | 27 | 1020 |
| 50756 | M22 | 100  | 45  | 31 | 270  |
| 50758 | M22 | 160  | 100 | 31 | 430  |
| 50759 | M22 | 200  | 125 | 31 | 500  |
| 50760 | M22 | 250  | 160 | 31 | 670  |
| 50761 | M22 | 315  | 180 | 31 | 790  |
| 50763 | M22 | 400  | 250 | 31 | 1070 |
| 50766 | M24 | 100  | 45  | 35 | 290  |
| 50767 | M24 | 125  | 63  | 35 | 380  |
| 50768 | M24 | 160  | 100 | 35 | 470  |
| 50769 | M24 | 200  | 125 | 35 | 580  |
| 50770 | M24 | 250  | 160 | 35 | 730  |
| 50771 | M24 | 315  | 200 | 35 | 920  |
| 50773 | M24 | 400  | 250 | 35 | 1160 |
| 50775 | M24 | 500  | 315 | 35 | 1460 |
| 50777 | M24 | 630  | 315 | 35 | 1850 |
| 50778 | M27 | 125  | 56  | 39 | 485  |
| 50780 | M27 | 200  | 125 | 39 | 770  |
| 50782 | M27 | 315  | 200 | 39 | 1110 |
| 50784 | M27 | 400  | 250 | 39 | 1535 |
| 50786 | M27 | 500  | 315 | 39 | 1930 |
| 50789 | M30 | 125  | 56  | 43 | 590  |
| 50790 | M30 | 200  | 125 | 43 | 950  |
| 50791 | M30 | 315  | 200 | 43 | 1490 |
| 50792 | M30 | 500  | 315 | 43 | 2360 |
| 50793 | M30 | 700  | 400 | 43 | 3300 |
| 50865 | M30 | 1000 | 400 | 43 | 4700 |
| 50794 | M36 | 160  | 80  | 51 | 1100 |
| 50795 | M36 | 200  | 125 | 51 | 1380 |
| 50796 | M36 | 250  | 160 | 51 | 1710 |
| 50870 | M36 | 315  | 200 | 51 | 2150 |
| 50797 | M36 | 400  | 250 | 51 | 2740 |
| 50798 | M36 | 500  | 315 | 51 | 3540 |
| 50799 | M36 | 700  | 400 | 51 | 4780 |
| 50801 | M42 | 315  | 200 | 59 | 2950 |
| 50802 | M42 | 400  | 250 | 59 | 3750 |
| 50803 | M42 | 500  | 315 | 59 | 4690 |



M 6 - M12 résistance veredeld op vastheid 10.9.

M 14 - M 42 résistance veredeld op vastheid 8.8.

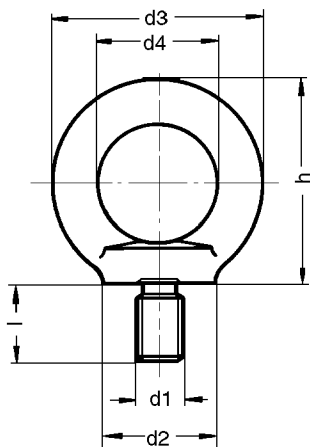
| code  | d   | D x L    | b   | a    | e  | k  | A <sup>+</sup> A <sub>1</sub> |
|-------|-----|----------|-----|------|----|----|-------------------------------|
| 50501 | M 6 | 6 x 25   | 15  | 5,7  | 10 | 4  | 9                             |
| 50502 | M 6 | 6 x 40   | 28  | 5,7  | 10 | 4  | 12                            |
| 50503 | M 6 | 6 x 63   | 40  | 5,7  | 10 | 4  | 18                            |
| 50504 | M 8 | 8 x 32   | 22  | 7,7  | 13 | 6  | 20                            |
| 50506 | M 8 | 8 x 50   | 35  | 7,7  | 13 | 6  | 25                            |
| 50508 | M 8 | 8 x 80   | 50  | 7,7  | 13 | 6  | 30                            |
| 50511 | M10 | 10 x 40  | 30  | 9,7  | 15 | 6  | 30                            |
| 50513 | M10 | 10 x 63  | 45  | 9,7  | 15 | 6  | 50                            |
| 50514 | M10 | 10 x 100 | 60  | 9,7  | 15 | 6  | 70                            |
| 50515 | M12 | 12 x 50  | 35  | 11,7 | 18 | 7  | 60                            |
| 50516 | M12 | 12 x 63  | 40  | 11,7 | 18 | 7  | 65                            |
| 50518 | M12 | 12 x 80  | 55  | 11,7 | 18 | 7  | 75                            |
| 50520 | M12 | 12 x 125 | 75  | 11,7 | 18 | 7  | 110                           |
| 50521 | M12 | 12 x 200 | 120 | 11,7 | 18 | 7  | 160                           |
| 50522 | M12 | 14 x 50  | 35  | 13,7 | 22 | 8  | 70                            |
| 50523 | M12 | 14 x 63  | 45  | 13,7 | 22 | 8  | 80                            |
| 50525 | M12 | 14 x 80  | 55  | 13,7 | 22 | 8  | 100                           |
| 50527 | M12 | 14 x 125 | 75  | 13,7 | 22 | 8  | 120                           |
| 50528 | M12 | 14 x 200 | 120 | 13,7 | 22 | 8  | 180                           |
| 50530 | M14 | 16 x 63  | 45  | 15,7 | 25 | 9  | 115                           |
| 50532 | M14 | 16 x 100 | 65  | 15,7 | 25 | 9  | 150                           |
| 50534 | M14 | 16 x 160 | 100 | 15,7 | 25 | 9  | 220                           |
| 50535 | M14 | 16 x 250 | 150 | 15,7 | 25 | 9  | 300                           |
| 50536 | M16 | 16 x 63  | 45  | 15,7 | 25 | 9  | 140                           |
| 50537 | M16 | 16 x 80  | 55  | 15,7 | 25 | 9  | 160                           |
| 50539 | M16 | 16 x 100 | 65  | 15,7 | 25 | 9  | 180                           |
| 50540 | M16 | 16 x 160 | 100 | 15,7 | 25 | 9  | 260                           |
| 50541 | M16 | 16 x 200 | 125 | 15,7 | 25 | 9  | 315                           |
| 50542 | M16 | 16 x 250 | 150 | 15,7 | 25 | 9  | 380                           |
| 50543 | M16 | 18 x 63  | 45  | 17,7 | 28 | 10 | 160                           |
| 50544 | M16 | 18 x 80  | 55  | 17,7 | 28 | 10 | 185                           |
| 50545 | M16 | 18 x 100 | 65  | 17,7 | 28 | 10 | 203                           |
| 50546 | M16 | 18 x 160 | 100 | 17,7 | 28 | 10 | 280                           |
| 50547 | M16 | 18 x 200 | 125 | 17,7 | 28 | 10 | 330                           |
| 50548 | M16 | 18 x 250 | 150 | 17,7 | 28 | 10 | 430                           |
| 50549 | M20 | 20 x 80  | 55  | 19,7 | 32 | 12 | 290                           |
| 50550 | M20 | 20 x 100 | 65  | 19,7 | 32 | 12 | 340                           |
| 50551 | M20 | 20 x 125 | 85  | 19,7 | 32 | 12 | 390                           |
| 50552 | M20 | 20 x 160 | 110 | 19,7 | 32 | 12 | 470                           |

| code   | d   | D x L    | b   | a    | e  | k  | A <sup>+</sup> A <sub>1</sub> |
|--------|-----|----------|-----|------|----|----|-------------------------------|
| 50553  | M20 | 20 x 200 | 125 | 19,7 | 32 | 12 | 550                           |
| 50554  | M20 | 20 x 250 | 150 | 19,7 | 32 | 12 | 670                           |
| 50555  | M20 | 20 x 315 | 190 | 19,7 | 32 | 12 | 800                           |
| 50556  | M20 | 22 x 80  | 55  | 21,7 | 35 | 14 | 330                           |
| 50557  | M20 | 22 x 100 | 65  | 21,7 | 35 | 14 | 400                           |
| 50558  | M20 | 22 x 125 | 85  | 21,7 | 35 | 14 | 428                           |
| 50559  | M20 | 22 x 160 | 110 | 21,7 | 35 | 14 | 500                           |
| 50560  | M20 | 22 x 200 | 125 | 21,7 | 35 | 14 | 570                           |
| 50561  | M20 | 22 x 250 | 150 | 21,7 | 35 | 14 | 680                           |
| 50562  | M20 | 22 x 315 | 190 | 21,7 | 35 | 14 | 820                           |
| 50563  | M24 | 24 x 100 | 70  | 23,7 | 40 | 16 | 540                           |
| 50564  | M24 | 24 x 125 | 85  | 23,7 | 40 | 16 | 640                           |
| 50565  | M24 | 24 x 160 | 110 | 23,7 | 40 | 16 | 770                           |
| 50566  | M24 | 24 x 200 | 125 | 23,7 | 40 | 16 | 900                           |
| 50567  | M24 | 24 x 250 | 150 | 23,7 | 40 | 16 | 1040                          |
| 50568  | M24 | 24 x 315 | 190 | 23,7 | 40 | 16 | 1270                          |
| 50569  | M24 | 24 x 400 | 240 | 23,7 | 40 | 16 | 1410                          |
| 50570  | M24 | 28 x 100 | 70  | 27,7 | 44 | 18 | 650                           |
| 50571  | M24 | 28 x 125 | 85  | 27,7 | 44 | 18 | 720                           |
| 50572  | M24 | 28 x 160 | 110 | 27,7 | 44 | 18 | 800                           |
| 50573  | M24 | 28 x 200 | 125 | 27,7 | 44 | 18 | 950                           |
| 50574  | M24 | 28 x 250 | 150 | 27,7 | 44 | 18 | 1120                          |
| 50575  | M24 | 28 x 315 | 190 | 27,7 | 44 | 18 | 1350                          |
| 50576  | M24 | 28 x 400 | 240 | 27,7 | 44 | 18 | 1490                          |
| 50577  | M30 | 36 x 125 | 80  | 35,6 | 54 | 22 | 1250                          |
| 50578  | M30 | 36 x 160 | 110 | 35,6 | 54 | 22 | 1440                          |
| 50579  | M30 | 36 x 200 | 135 | 35,6 | 54 | 22 | 1630                          |
| 50580  | M30 | 36 x 250 | 150 | 35,6 | 54 | 22 | 1920                          |
| 50581  | M30 | 36 x 315 | 200 | 35,6 | 54 | 22 | 2300                          |
| 50583  | M30 | 36 x 500 | 300 | 35,6 | 54 | 22 | 3300                          |
| 50584  | M36 | 42 x 160 | 100 | 41,6 | 65 | 26 | 2200                          |
| 50586  | M36 | 42 x 250 | 175 | 41,6 | 65 | 26 | 2820                          |
| 50588  | M36 | 42 x 400 | 250 | 41,6 | 65 | 26 | 3930                          |
| 50590  | M36 | 42 x 600 | 340 | 41,6 | 65 | 26 | 5480                          |
| 505914 | M42 | 48 x 160 | 100 | 47,6 | 75 | 30 | 3400                          |
| 50593  | M42 | 48 x 250 | 175 | 47,6 | 75 | 30 | 4300                          |
| 50595  | M42 | 48 x 400 | 250 | 47,6 | 75 | 30 | 5800                          |

# DIN 580

## ANNEAUX DE LEVAGE

## HEFRINGEN

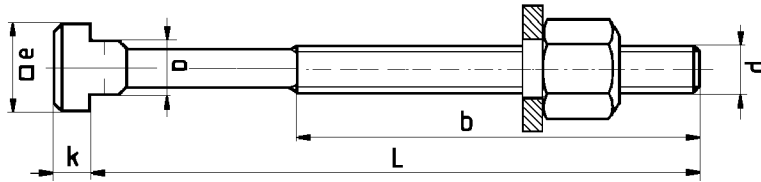


| code  | d1  | d2 | d3 | d4 | l  |
|-------|-----|----|----|----|----|
| 10431 | M8  | 20 | 36 | 20 | 13 |
| 10432 | M10 | 25 | 45 | 25 | 17 |
| 10433 | M12 | 30 | 54 | 30 | 21 |
| 10435 | M16 | 35 | 63 | 35 | 27 |
| 10437 | M20 | 40 | 72 | 40 | 30 |

| code  | d1       | d2 | d3  | d4 | h   | l  | force-kraft Kg | gr   |
|-------|----------|----|-----|----|-----|----|----------------|------|
| 10402 | M8       | 20 | 36  | 20 | 36  | 13 | 140            | 60   |
| 10403 | M10      | 25 | 45  | 25 | 45  | 17 | 230            | 110  |
| 10404 | M12      | 30 | 54  | 30 | 53  | 21 | 340            | 180  |
| 10405 | M14      | 35 | 63  | 35 | 62  | 27 | 500            | 260  |
| 10407 | M16      | 35 | 63  | 35 | 62  | 27 | 700            | 280  |
| 10410 | M20      | 40 | 72  | 40 | 71  | 30 | 1200           | 450  |
| 10413 | M24      | 50 | 90  | 50 | 90  | 36 | 1800           | 740  |
| 10414 | M30      | 65 | 108 | 60 | 109 | 45 | 3600           | 1660 |
| 10417 | M36      | 75 | 126 | 70 | 128 | 54 | 5100           | 2650 |
| 10419 | M42      | 85 | 144 | 80 | 147 | 63 | 7000           | 4030 |
| 10421 | 5/16 unc | 20 | 36  | 20 | 36  | 13 | 140            | 60   |
| 10422 | 3/8 unc  | 25 | 45  | 25 | 45  | 17 | 230            | 110  |
| 10423 | 1/2 unc  | 30 | 54  | 30 | 53  | 21 | 340            | 180  |
| 10424 | 5/8 unc  | 35 | 63  | 35 | 62  | 27 | 700            | 280  |
| 10425 | 3/4 unc  | 40 | 72  | 40 | 71  | 30 | 1200           | 450  |
| 10426 | 1 unc    | 50 | 90  | 50 | 90  | 36 | 1800           | 740  |

MAT : INOX A2  
RVS A2

MAT : acier C15 estampé - recuit  
staal C15 gesmeed - gegloeid



| code  | d    | D x L    | b   | a    | e  | k  |
|-------|------|----------|-----|------|----|----|
| 50410 | M 6  | 6 x 25   | 15  | 5,7  | 10 | 4  |
| 50411 | M 6  | 6 x 40   | 28  | 5,7  | 10 | 4  |
| 50412 | M 6  | 6 x 63   | 40  | 5,7  | 10 | 4  |
| 50413 | M 8  | 8 x 32   | 22  | 7,7  | 13 | 6  |
| 50414 | M 8  | 8 x 50   | 35  | 7,7  | 13 | 6  |
| 50415 | M 8  | 8 x 80   | 50  | 7,7  | 13 | 6  |
| 50416 | M 10 | 10 x 40  | 30  | 9,7  | 15 | 6  |
| 50487 | M 10 | 10 x 63  | 45  | 9,7  | 15 | 6  |
| 50417 | M 10 | 10 x 100 | 60  | 9,7  | 15 | 6  |
| 50419 | M 12 | 12 x 50  | 35  | 11,7 | 18 | 7  |
| 50420 | M 12 | 12 x 63  | 40  | 11,7 | 18 | 7  |
| 50421 | M 12 | 12 x 80  | 55  | 11,7 | 18 | 7  |
| 50422 | M 12 | 12 x 125 | 75  | 11,7 | 18 | 7  |
| 50490 | M 12 | 12 x 200 | 120 | 11,7 | 18 | 7  |
| 50488 | M 12 | 14 x 50  | 35  | 13,7 | 22 | 8  |
| 50425 | M 12 | 14 x 63  | 45  | 13,7 | 22 | 8  |
| 50426 | M 12 | 14 x 80  | 55  | 13,7 | 22 | 8  |
| 50427 | M 12 | 14 x 125 | 75  | 13,7 | 22 | 8  |
| 50428 | M 12 | 14 x 200 | 120 | 13,7 | 22 | 8  |
| 50429 | M 14 | 16 x 63  | 45  | 15,7 | 25 | 9  |
| 50430 | M 14 | 16 x 100 | 65  | 15,7 | 25 | 9  |
| 50431 | M 14 | 16 x 160 | 100 | 15,7 | 25 | 9  |
| 50432 | M 14 | 16 x 250 | 150 | 15,7 | 25 | 9  |
| 50433 | M 16 | 16 x 63  | 45  | 15,7 | 25 | 9  |
| 50434 | M 16 | 16 x 80  | 55  | 15,7 | 25 | 9  |
| 50435 | M 16 | 16 x 100 | 65  | 15,7 | 25 | 9  |
| 50436 | M 16 | 16 x 160 | 100 | 15,7 | 25 | 9  |
| 50437 | M 16 | 16 x 200 | 125 | 15,7 | 25 | 9  |
| 50438 | M 16 | 16 x 250 | 150 | 15,7 | 25 | 9  |
| 50439 | M 16 | 18 x 63  | 45  | 17,7 | 28 | 10 |
| 50440 | M 16 | 18 x 80  | 55  | 17,7 | 28 | 10 |
| 50441 | M 16 | 18 x 100 | 65  | 17,7 | 28 | 10 |
| 50442 | M 16 | 18 x 160 | 100 | 17,7 | 28 | 10 |
| 50443 | M 16 | 18 x 200 | 125 | 17,7 | 28 | 10 |
| 50444 | M 16 | 18 x 250 | 150 | 17,7 | 28 | 10 |
| 50445 | M 20 | 20 x 80  | 55  | 19,7 | 32 | 12 |
| 50446 | M 20 | 20 x 100 | 65  | 19,7 | 32 | 12 |

| code  | d   | D x L    | b   | a    | e  | k  |
|-------|-----|----------|-----|------|----|----|
| 50447 | M20 | 20 x 125 | 85  | 19,7 | 32 | 12 |
| 50448 | M20 | 20 x 160 | 110 | 19,7 | 32 | 12 |
| 50449 | M20 | 20 x 200 | 125 | 19,7 | 32 | 12 |
| 50450 | M20 | 20 x 250 | 150 | 19,7 | 32 | 12 |
| 50451 | M20 | 20 x 315 | 190 | 19,7 | 32 | 12 |
| 50452 | M20 | 22 x 80  | 55  | 21,7 | 35 | 14 |
| 50453 | M20 | 22 x 100 | 65  | 21,7 | 35 | 14 |
| 50454 | M20 | 22 x 125 | 85  | 21,7 | 35 | 14 |
| 50455 | M20 | 22 x 160 | 110 | 21,7 | 35 | 14 |
| 50456 | M20 | 22 x 200 | 125 | 21,7 | 35 | 14 |
| 50457 | M20 | 22 x 250 | 150 | 21,7 | 35 | 14 |
| 50458 | M20 | 22 x 315 | 190 | 21,7 | 35 | 14 |
| 50459 | M24 | 24 x 100 | 70  | 23,7 | 40 | 16 |
| 50460 | M24 | 24 x 125 | 85  | 23,7 | 40 | 16 |
| 50461 | M24 | 24 x 160 | 110 | 23,7 | 40 | 16 |
| 50462 | M24 | 24 x 200 | 125 | 23,7 | 40 | 16 |
| 50463 | M24 | 24 x 250 | 150 | 23,7 | 40 | 16 |
| 50464 | M24 | 24 x 315 | 190 | 23,7 | 40 | 16 |
| 50465 | M24 | 24 x 400 | 240 | 23,7 | 40 | 16 |
| 50466 | M24 | 28 x 100 | 70  | 27,7 | 44 | 18 |
| 50467 | M24 | 28 x 125 | 85  | 27,7 | 44 | 18 |
| 50468 | M24 | 28 x 160 | 110 | 27,7 | 44 | 18 |
| 50469 | M24 | 28 x 200 | 125 | 27,7 | 44 | 18 |
| 50470 | M24 | 28 x 250 | 150 | 27,7 | 44 | 18 |
| 50471 | M24 | 28 x 315 | 190 | 27,7 | 44 | 18 |
| 50472 | M24 | 28 x 400 | 240 | 27,7 | 44 | 18 |
| 50473 | M30 | 36 x 125 | 80  | 35,6 | 54 | 22 |
| 50474 | M30 | 36 x 160 | 110 | 35,6 | 54 | 22 |
| 50476 | M30 | 36 x 200 | 135 | 35,6 | 54 | 22 |
| 50489 | M30 | 36 x 250 | 150 | 35,6 | 54 | 22 |
| 50477 | M30 | 36 x 315 | 200 | 35,6 | 54 | 22 |
| 50478 | M30 | 36 x 500 | 300 | 35,6 | 54 | 22 |
| 50479 | M36 | 42 x 160 | 100 | 41,6 | 65 | 26 |
| 50480 | M36 | 42 x 250 | 175 | 41,6 | 65 | 26 |
| 50481 | M36 | 42 x 400 | 250 | 41,6 | 65 | 26 |
| 50482 | M36 | 42 x 600 | 340 | 41,6 | 65 | 26 |
| 50483 | M42 | 48 x 160 | 100 | 47,6 | 75 | 30 |
| 50484 | M42 | 48 x 250 | 175 | 47,6 | 75 | 30 |
| 50485 | M42 | 48 x 400 | 250 | 47,6 | 75 | 30 |

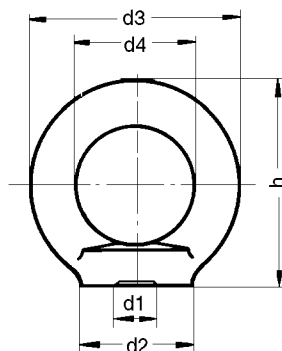
M 6 - M12 résistance - veredeld op vastheid 10.9.

M 14 - M 42 résistance - veredeld op vastheid 8.8.

# DIN 582

## ANNEAUX DE LEVAGE

## HEFRINGEN



| code  | d1  | d2 | d3 | d4 |
|-------|-----|----|----|----|
| 10481 | M8  | 20 | 36 | 20 |
| 10482 | M10 | 25 | 45 | 25 |
| 10483 | M12 | 30 | 54 | 30 |
| 10485 | M16 | 35 | 63 | 35 |
| 10487 | M20 | 40 | 72 | 40 |

MAT : INOX A2  
RVS A2

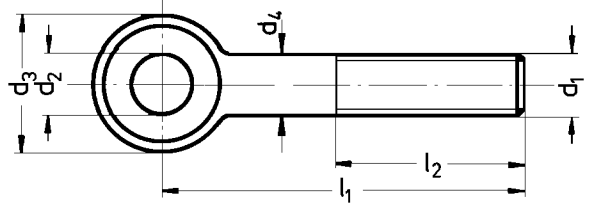
| code  | d1       | d2 | d3  | d4 | h   | force-kracht Kg | gr   |
|-------|----------|----|-----|----|-----|-----------------|------|
| 10452 | M8       | 20 | 36  | 20 | 36  | 140             | 50   |
| 10453 | M10      | 25 | 45  | 25 | 45  | 230             | 90   |
| 10454 | M12      | 30 | 54  | 30 | 53  | 340             | 160  |
| 10457 | M16      | 35 | 63  | 35 | 62  | 700             | 240  |
| 10460 | M20      | 40 | 72  | 40 | 71  | 1200            | 360  |
| 10463 | M24      | 50 | 90  | 50 | 90  | 1800            | 720  |
| 10464 | M30      | 65 | 108 | 60 | 109 | 3600            | 1320 |
| 10467 | M36      | 75 | 126 | 70 | 128 | 5100            | 2080 |
| 10469 | M42      | 85 | 144 | 80 | 147 | 7000            | 3110 |
| 10471 | 5/16 unc | 20 | 36  | 20 | 36  | 140             | 50   |
| 10472 | 3/8 unc  | 25 | 45  | 25 | 45  | 230             | 90   |
| 10473 | 1/2 unc  | 30 | 54  | 30 | 53  | 340             | 160  |
| 10474 | 5/8 unc  | 35 | 63  | 35 | 62  | 700             | 240  |
| 10475 | 3/4 unc  | 40 | 72  | 40 | 71  | 1200            | 360  |
| 10476 | 1 unc    | 50 | 90  | 50 | 90  | 1800            | 720  |

MAT : acier C15 estampé - recuit  
staal C15 gesmeed - gegloeid

# DIN 444

VIS A OEILLET

OOGSCHROEF



MAT : acier - staal 5.8

| CODE   | d1 X L1   | L2 | d2 H7 | H7      | d3 -0,3 | S  | d4 |
|--------|-----------|----|-------|---------|---------|----|----|
| 192271 | M6 X 50   | 32 | 6     | +12 / 0 | 14      | 7  | 6  |
| 192272 | M6 X 75   | 32 | 6     | +12 / 0 | 14      | 7  | 6  |
| 192273 | M8 X 50   | 32 | 8     | +15 / 0 | 18      | 9  | 8  |
| 192274 | M8 X 75   | 32 | 8     | +15 / 0 | 18      | 9  | 8  |
| 192275 | M10 X 50  | 40 | 10    | +15 / 0 | 20      | 12 | 10 |
| 192276 | M10 X 75  | 40 | 10    | +15 / 0 | 20      | 12 | 10 |
| 192277 | M10 X 100 | 40 | 10    | +15 / 0 | 20      | 12 | 10 |
| 192278 | M12 X 75  | 40 | 12    | +18 / 0 | 25      | 14 | 12 |
| 192279 | M12 X 100 | 40 | 12    | +18 / 0 | 25      | 14 | 12 |
| 192280 | M12 X 130 | 40 | 12    | +18 / 0 | 25      | 14 | 12 |

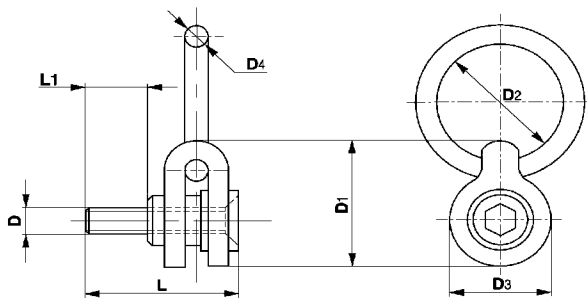


| CODE   | d1 X L1   | L2 | d2 H7 | H7      | d3 -0,3 | S  | d4 |
|--------|-----------|----|-------|---------|---------|----|----|
| 192201 | M6 X 50   | 32 | 6     | +15 / 0 | 14      | 7  | 6  |
| 192202 | M6 X 75   | 32 | 6     | +15 / 0 | 14      | 7  | 6  |
| 192211 | M8 X 50   | 32 | 8     | +15 / 0 | 18      | 9  | 8  |
| 192212 | M8 X 75   | 32 | 8     | +15 / 0 | 18      | 9  | 8  |
| 192222 | M10 X 50  | 40 | 10    | +15 / 0 | 20      | 12 | 10 |
| 192223 | M10 X 75  | 40 | 10    | +15 / 0 | 20      | 12 | 10 |
| 192224 | M10 X 100 | 40 | 10    | +15 / 0 | 20      | 12 | 10 |
| 192231 | M12 X 75  | 40 | 12    | +18 / 0 | 25      | 14 | 12 |
| 192232 | M12 X 100 | 40 | 12    | +18 / 0 | 25      | 14 | 12 |
| 192233 | M12 X 130 | 40 | 12    | +18 / 0 | 25      | 14 | 12 |
| 192241 | M16 X 75  | 50 | 16    | +18 / 0 | 32      | 17 | 16 |
| 192242 | M16 X 100 | 50 | 16    | +18 / 0 | 32      | 17 | 16 |
| 192243 | M16 X 130 | 50 | 16    | +18 / 0 | 32      | 17 | 16 |
| 192251 | M20 X 100 | 63 | 18    | +18 / 0 | 40      | 22 | 20 |
| 192252 | M20 X 130 | 63 | 18    | +18 / 0 | 40      | 22 | 20 |
| 192253 | M20 X 160 | 63 | 18    | +18 / 0 | 40      | 22 | 20 |

# 656

ANNEAUX DE LEVAGE

HEFRINGEN



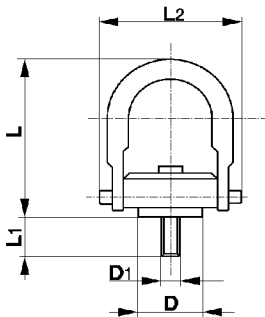
MAT : acier - staal

| code       | D   | D1    | D2    | D3    | D4   | L     | L1   | ↑    | Kg |
|------------|-----|-------|-------|-------|------|-------|------|------|----|
| 5656080000 | M8  | 50,8  | 50,8  | 38,1  | 9,5  | 61    | 16   | 325  |    |
| 5656100000 | M10 | 50,8  | 50,8  | 38,1  | 9,5  | 63    | 20   | 500  |    |
| 5656120000 | M12 | 81    | 76,2  | 60,3  | 15,9 | 85    | 24   | 725  |    |
| 5656160000 | M16 | 81    | 76,2  | 60,3  | 15,9 | 94    | 31   | 1400 |    |
| 5656200000 | M20 | 125,4 | 101,6 | 95,3  | 25,4 | 133   | 40   | 2290 |    |
| 5656240000 | M24 | 125,4 | 101,6 | 95,3  | 25,4 | 147   | 47   | 3050 |    |
| 5656300000 | M30 | 173   | 127   | 117,5 | 31,7 | 173,8 | 43,6 | 4850 |    |

# 658

ANNEAUX DE LEVAGE

HEFRINGEN



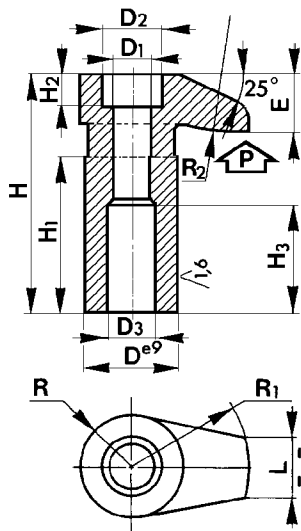
MAT : acier - staal

| code       | D     | D1  | D2   | D3    | L     | L1   | L2    | ↑     | Kg |
|------------|-------|-----|------|-------|-------|------|-------|-------|----|
| 5658080000 | 19    | M8  | 9,7  | 21,8  | 67,8  | 12,5 | 46,7  | 400   |    |
| 5658100000 | 19    | M10 | 9,7  | 21,8  | 67,8  | 17,5 | 46,7  | 450   |    |
| 5658120000 | 38,1  | M12 | 19   | 44,8  | 121,4 | 19   | 89,4  | 1050  |    |
| 5658160000 | 38,1  | M16 | 19   | 44,8  | 121,4 | 29   | 89,4  | 1900  |    |
| 5658200000 | 38,1  | M20 | 19   | 44,8  | 121,4 | 34   | 89,4  | 2150  |    |
| 5658210000 | 58,7  | M20 | 25,4 | 71,2  | 165,6 | 32   | 130,6 | 3000  |    |
| 5658240000 | 58,7  | M24 | 25,4 | 71,2  | 165,6 | 37   | 130,6 | 4200  |    |
| 5658300000 | 81    | M30 | 31,7 | 89    | 221,7 | 41,9 | 165,1 | 7000  |    |
| 5658360000 | 106,4 | M36 | 44,4 | 114,4 | 316,7 | 63,5 | 217,2 | 11000 |    |
| 5658420000 | 106,4 | M42 | 44,4 | 114,4 | 316,7 | 68   | 217,2 | 12500 |    |
| 5658480000 | 106,4 | M48 | 44,4 | 114,4 | 316,7 | 82,4 | 217,2 | 13500 |    |

# 437

CROCHET DE BRIDAGE

SPANHAAK



MAT : XC 38 bruni - gebruineer

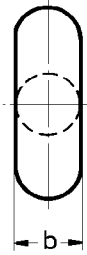
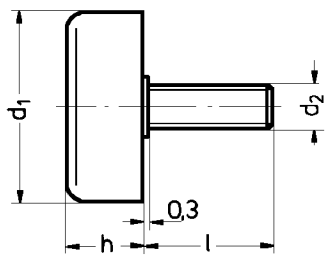
| CODE       | D  | H1 | H  | R  | R1 | L  | E  | R2 | D2 | H2 | D1   | D3 | H3 |
|------------|----|----|----|----|----|----|----|----|----|----|------|----|----|
| 5437060000 | 16 | 28 | 42 | 9  | 20 | 11 | 10 | 30 | 11 | 6  | 6,5  | 10 | 20 |
| 5437080000 | 20 | 35 | 52 | 12 | 25 | 15 | 12 | 50 | 14 | 8  | 8,5  | 12 | 25 |
| 5437100000 | 25 | 44 | 66 | 14 | 32 | 17 | 16 | 60 | 17 | 10 | 10,5 | 14 | 32 |
| 5437120000 | 32 | 56 | 83 | 18 | 40 | 20 | 20 | 80 | 20 | 12 | 12,5 | 17 | 40 |

Gorrex - Tel: 00 32 (0) 81 56.71.91  
 Fax: 00 32 (0) 81 56.77.91 www.gorrex.be

431

VIS EN " T "

T - SCHROEF



MAT : INOX tête 1.4404  
filet 1.4301  
RVS kop 1.4404  
draad 1.4301

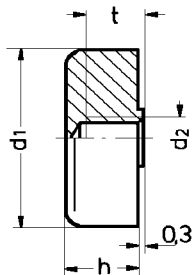


| code     | d1 | d2 | l  | b  | h  |
|----------|----|----|----|----|----|
| 14310616 | 25 | M6 | 16 | 8  | 10 |
| 14310620 | 25 | M6 | 20 | 8  | 10 |
| 14310625 | 25 | M6 | 25 | 8  | 10 |
| 14310816 | 30 | M8 | 16 | 10 | 12 |
| 14310820 | 30 | M8 | 20 | 10 | 12 |
| 14310825 | 30 | M8 | 25 | 10 | 12 |
| 14310832 | 30 | M8 | 32 | 10 | 12 |

432

TETE DE VIS FEMELLE

MOERSCHROEFKOP



MAT : INOX 1.43206 - RVS 1.43206



| code     | d1 | d2 | b  | h  | t |
|----------|----|----|----|----|---|
| 14320600 | 25 | M6 | 8  | 10 | 7 |
| 14320800 | 30 | M8 | 10 | 12 | 9 |

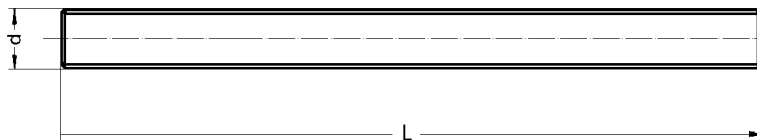
DIN 975

GOUJON PAR METRE

DRAADEINDEN PER METER

MAT : ACIER - ACIER ZINGUE - LAITON - INOX A2  
UITV : STAAL - VERZINKTSTAAL - MESSING - RVS A2

Par 10 pièces minimum  
Per 10 stück mini



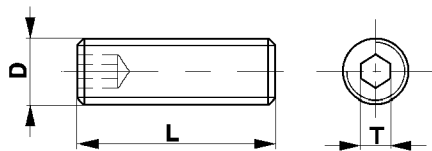
| d   | l    | ± <sup>+</sup> <sub>-</sub> |
|-----|------|-----------------------------|
| M 3 | 1000 | 56                          |
| M 4 | 1000 | 84                          |
| M 5 | 1000 | 120                         |
| M 6 | 1000 | 165                         |
| M 8 | 1000 | 310                         |
| M10 | 1000 | 490                         |
| M12 | 1000 | 700                         |

DIN 913

VIS SANS TETE, SIX PANS CREUX

SCHROEF ZONDER KOP, BINNENZESKANT

SCHROEF ZONDER KOP, BINNENZESKANT



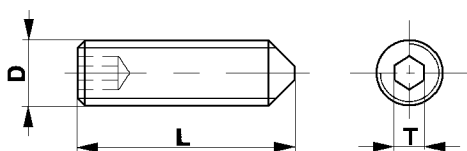
| d   | l |   |   |    |    |    |    |    |    |    |    |    |    |    |    |    | d1  | t   | SW  |     |
|-----|---|---|---|----|----|----|----|----|----|----|----|----|----|----|----|----|-----|-----|-----|-----|
| M 3 | 5 | 6 | 8 | 10 | 12 | 16 | 20 | -  | -  | -  | -  | -  | -  | -  | -  | -  | 2,0 | 1,2 | 1,5 |     |
| M 4 | 5 | 6 | 8 | 10 | 12 | 16 | 20 | 25 | -  | -  | -  | -  | -  | -  | -  | -  | 2,5 | 1,5 | 2,0 |     |
| M 5 | 5 | 6 | 8 | 10 | 12 | 16 | 20 | 25 | 30 | -  | -  | -  | -  | -  | -  | -  | 3,5 | 2,0 | 2,5 |     |
| M 6 | - | 6 | 8 | 10 | 12 | 16 | 20 | 25 | 30 | 35 | 40 | 50 | 60 | -  | -  | -  | 4,0 | 2,0 | 3,0 |     |
| M 8 | - | - | 8 | 10 | 12 | 16 | 20 | 25 | 30 | 35 | 40 | 50 | 60 | 70 | 80 | -  | 5,5 | 3,0 | 4,0 |     |
| M10 | - | - | - | 10 | 12 | 16 | 20 | 25 | 30 | 35 | 40 | 50 | 60 | 70 | 80 | 90 | 100 | 7,0 | 4,0 | 5,0 |

DIN 914

VIS SANS TETE, SIX PANS CREUX

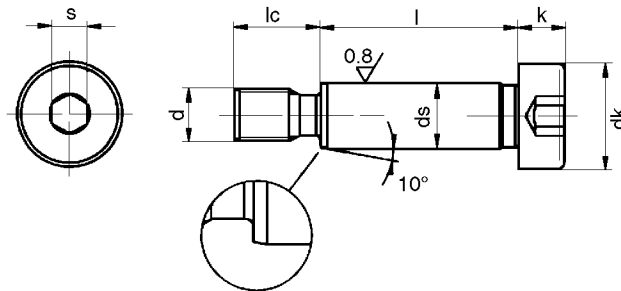
SCHROEF ZONDER KOP, BINNENZESKANT

SCHROEF ZONDER KOP, BINNENZESKANT



| d   | l |   |   |    |    |    |    |    |    |    |    |    |    |    |    |    | d1  | t   | SW  |     |
|-----|---|---|---|----|----|----|----|----|----|----|----|----|----|----|----|----|-----|-----|-----|-----|
| M 3 | 5 | 6 | 8 | 10 | 12 | 16 | 20 | -  | -  | -  | -  | -  | -  | -  | -  | -  | 2,0 | 1,2 | 1,5 |     |
| M 4 | 5 | 6 | 8 | 10 | 12 | 16 | 20 | 25 | -  | -  | -  | -  | -  | -  | -  | -  | 2,5 | 1,5 | 2,0 |     |
| M 5 | 5 | 6 | 8 | 10 | 12 | 16 | 20 | 25 | 30 | -  | -  | -  | -  | -  | -  | -  | 3,5 | 2,0 | 2,5 |     |
| M 6 | - | 6 | 8 | 10 | 12 | 16 | 20 | 25 | 30 | 35 | 40 | 50 | 60 | -  | -  | -  | 4,0 | 2,0 | 3,0 |     |
| M 8 | - | - | 8 | 10 | 12 | 16 | 20 | 25 | 30 | 35 | 40 | 50 | 60 | 70 | 80 | -  | 5,5 | 3,0 | 4,0 |     |
| M10 | - | - | - | 10 | 12 | 16 | 20 | 25 | 30 | 35 | 40 | 50 | 60 | 70 | 80 | 90 | 100 | 7,0 | 4,0 | 5,0 |

MAT : acier 12.9 HRC 37-43  
 UITV : staal 12.9 HRC 37-43



| ds h8 | 6       | 8       | 10       | 12      | 16       | 20      | 24      |
|-------|---------|---------|----------|---------|----------|---------|---------|
| h8    | 0 / -22 | 0 / -22 | 0 / -27  | 0 / -27 | 0 / -27  | 0 / -33 | 0 / -33 |
| dk    | 10      | 13      | 16       | 18      | 24       | 30      | 36      |
| k     | 4,50    | 5,50    | 7,00     | 9,00    | 11,00    | 14,00   | 16,00   |
| lc    | 9,50    | 11,00   | 13,00    | 16,00   | 18,00    | 22,00   | 27,00   |
| s     | 3       | 4       | 5        | 6       | 8        | 10      | 12      |
| d     | M05x0,8 | M06x1,0 | M08x1,25 | M10x1,5 | M12x1,75 | M16x2,0 | M20x2,5 |
| l     |         |         |          |         |          |         |         |
| 10    | *       |         |          |         |          |         |         |
| 12    | *       | *       |          |         |          |         |         |
| 15    | *       | *       | *        | *       |          |         |         |
| 16    | *       | *       | *        | *       |          |         |         |
| 20    | *       | *       | *        | *       |          |         |         |
| 25    | *       | *       | *        | *       |          |         |         |
| 30    | *       | *       | *        | *       | *        |         |         |
| 35    | *       | *       | *        | *       | *        |         |         |
| 40    | *       | *       | *        | *       | *        | *       |         |
| 45    | *       | *       | *        | *       | *        | *       |         |
| 50    | *       | *       | *        | *       | *        | *       | *       |
| 55    | *       | *       | *        | *       | *        | *       | *       |
| 60    | *       | *       | *        | *       | *        | *       | *       |
| 65    |         | *       | *        | *       | *        | *       | *       |
| 70    |         | *       | *        | *       | *        | *       | *       |
| 80    |         | *       | *        | *       | *        | *       | *       |
| 90    |         | *       | *        | *       | *        | *       | *       |
| 100   |         | *       | *        | *       | *        | *       | *       |
| 120   |         |         |          | *       | *        | *       | *       |

CODE : ISO 7379 : 97379  
 voorbeeld code : ISO 7379 10 x 90 9737910090  
 voorbeeld bestelling : ISO 7379 6 x 50

CODE : ISO 7379 : 97379  
 exemple de code : ISO 7379 10 x 90 9737910090  
 exemple de commande : ISO 7379 6 x 50